



# Title Plan - LT 557561

---

**Survey Number** LT 557561  
**Surveyor Reference** 709306.006 Kenepuru Stage 2 a/b  
**Surveyor** Brett Douglas Gawn  
**Survey Firm** Calibre Consulting Limited  
**Surveyor Declaration**

---

## Survey Details

**Dataset Description** Lots 171 to 184, 201 to 273, 1004, 1510 and 2020 to 2022 Being a Subdivision of Lot 1508 DP 528689.

**Status** Initiated

**Land District** Wellington

**Submitted Date**

**Survey Class** Class A

**Survey Approval Date**

**Deposit Date**

---

## Territorial Authorities

Porirua City

---

## Comprised In

RT 858364

---

## Created Parcels

Parcels	Parcel Intent	Area	RT Reference
Lot 171 Deposited Plan 557561	Fee Simple Title	0.0392 Ha	976929
Lot 172 Deposited Plan 557561	Fee Simple Title	0.0303 Ha	976930
Lot 173 Deposited Plan 557561	Fee Simple Title	0.0317 Ha	976931
Lot 174 Deposited Plan 557561	Fee Simple Title	0.0236 Ha	976932
Lot 175 Deposited Plan 557561	Fee Simple Title	0.0231 Ha	976933
Lot 176 Deposited Plan 557561	Fee Simple Title	0.0244 Ha	976934
Lot 177 Deposited Plan 557561	Fee Simple Title	0.0274 Ha	976935
Lot 178 Deposited Plan 557561	Fee Simple Title	0.0349 Ha	976936
Lot 179 Deposited Plan 557561	Fee Simple Title	0.0252 Ha	976937
Lot 180 Deposited Plan 557561	Fee Simple Title	0.0246 Ha	976938
Lot 181 Deposited Plan 557561	Fee Simple Title	0.0241 Ha	976939
Lot 182 Deposited Plan 557561	Fee Simple Title	0.0224 Ha	976940
Lot 183 Deposited Plan 557561	Fee Simple Title	0.0391 Ha	976941
Lot 184 Deposited Plan 557561	Fee Simple Title	0.0424 Ha	976942
Lot 201 Deposited Plan 557561	Fee Simple Title	0.0330 Ha	976943
Lot 202 Deposited Plan 557561	Fee Simple Title	0.0230 Ha	976944
Lot 203 Deposited Plan 557561	Fee Simple Title	0.0235 Ha	976945
Lot 204 Deposited Plan 557561	Fee Simple Title	0.0239 Ha	976946
Lot 205 Deposited Plan 557561	Fee Simple Title	0.0243 Ha	976947
Lot 206 Deposited Plan 557561	Fee Simple Title	0.0373 Ha	976948
Lot 207 Deposited Plan 557561	Fee Simple Title	0.0210 Ha	976949
Lot 208 Deposited Plan 557561	Fee Simple Title	0.0150 Ha	976950
Lot 209 Deposited Plan 557561	Fee Simple Title	0.0150 Ha	976951

# Title Plan - LT 557561

---

## Created Parcels

Parcels	Parcel Intent	Area	RT Reference
Lot 210 Deposited Plan 557561	Fee Simple Title	0.0150 Ha	976952
Lot 211 Deposited Plan 557561	Fee Simple Title	0.0150 Ha	976953
Lot 212 Deposited Plan 557561	Fee Simple Title	0.0150 Ha	976954
Lot 213 Deposited Plan 557561	Fee Simple Title	0.0198 Ha	976955
Lot 214 Deposited Plan 557561	Fee Simple Title	0.0195 Ha	976956
Lot 215 Deposited Plan 557561	Fee Simple Title	0.0162 Ha	976957
Lot 216 Deposited Plan 557561	Fee Simple Title	0.0161 Ha	976958
Lot 217 Deposited Plan 557561	Fee Simple Title	0.0161 Ha	976959
Lot 218 Deposited Plan 557561	Fee Simple Title	0.0160 Ha	976960
Lot 219 Deposited Plan 557561	Fee Simple Title	0.0160 Ha	976961
Lot 220 Deposited Plan 557561	Fee Simple Title	0.0159 Ha	976962
Lot 221 Deposited Plan 557561	Fee Simple Title	0.0235 Ha	976963
Lot 222 Deposited Plan 557561	Fee Simple Title	0.0599 Ha	976964
Lot 223 Deposited Plan 557561	Fee Simple Title	0.0657 Ha	976965
Lot 224 Deposited Plan 557561	Fee Simple Title	0.0692 Ha	976966
Lot 225 Deposited Plan 557561	Fee Simple Title	0.0626 Ha	976967
Lot 226 Deposited Plan 557561	Fee Simple Title	0.0745 Ha	976968
Lot 227 Deposited Plan 557561	Fee Simple Title	0.0594 Ha	976969
Lot 228 Deposited Plan 557561	Fee Simple Title	0.0467 Ha	976970
Lot 229 Deposited Plan 557561	Fee Simple Title	0.0455 Ha	976971
Lot 230 Deposited Plan 557561	Fee Simple Title	0.0781 Ha	976972
Lot 231 Deposited Plan 557561	Fee Simple Title	0.0799 Ha	976973
Lot 232 Deposited Plan 557561	Fee Simple Title	0.0788 Ha	976974
Lot 233 Deposited Plan 557561	Fee Simple Title	0.0863 Ha	976975
Lot 234 Deposited Plan 557561	Fee Simple Title	0.0645 Ha	976976
Lot 235 Deposited Plan 557561	Fee Simple Title	0.0642 Ha	976977
Lot 236 Deposited Plan 557561	Fee Simple Title	0.0607 Ha	976978
Lot 237 Deposited Plan 557561	Fee Simple Title	0.0618 Ha	976979
Lot 238 Deposited Plan 557561	Fee Simple Title	0.0737 Ha	976980
Lot 239 Deposited Plan 557561	Fee Simple Title	0.1514 Ha	976981
Lot 240 Deposited Plan 557561	Fee Simple Title	0.1170 Ha	976982
Lot 241 Deposited Plan 557561	Fee Simple Title	0.0684 Ha	976983
Lot 242 Deposited Plan 557561	Fee Simple Title	0.0625 Ha	976984
Lot 243 Deposited Plan 557561	Fee Simple Title	0.0911 Ha	976985
Lot 244 Deposited Plan 557561	Fee Simple Title	0.0727 Ha	976986
Lot 245 Deposited Plan 557561	Fee Simple Title	0.0684 Ha	976987
Lot 246 Deposited Plan 557561	Fee Simple Title	0.0651 Ha	976988
Lot 247 Deposited Plan 557561	Fee Simple Title	0.0668 Ha	976989
Lot 248 Deposited Plan 557561	Fee Simple Title	0.0995 Ha	976990
Lot 249 Deposited Plan 557561	Fee Simple Title	0.0782 Ha	976991
Lot 250 Deposited Plan 557561	Fee Simple Title	0.0584 Ha	976992
Lot 251 Deposited Plan 557561	Fee Simple Title	0.0592 Ha	976993
Lot 252 Deposited Plan 557561	Fee Simple Title	0.0601 Ha	976994
Lot 253 Deposited Plan 557561	Fee Simple Title	0.0610 Ha	976995

# Title Plan - LT 557561

---

## Created Parcels

Parcels	Parcel Intent	Area	RT Reference
Lot 254 Deposited Plan 557561	Fee Simple Title	0.0618 Ha	976996
Lot 255 Deposited Plan 557561	Fee Simple Title	0.0627 Ha	976997
Lot 256 Deposited Plan 557561	Fee Simple Title	0.0637 Ha	976998
Lot 257 Deposited Plan 557561	Fee Simple Title	0.0477 Ha	976999
Lot 258 Deposited Plan 557561	Fee Simple Title	0.0567 Ha	977000
Lot 259 Deposited Plan 557561	Fee Simple Title	0.0588 Ha	977001
Lot 260 Deposited Plan 557561	Fee Simple Title	0.0599 Ha	977002
Lot 261 Deposited Plan 557561	Fee Simple Title	0.0610 Ha	977003
Lot 262 Deposited Plan 557561	Fee Simple Title	0.0621 Ha	977004
Lot 263 Deposited Plan 557561	Fee Simple Title	0.0632 Ha	977005
Lot 264 Deposited Plan 557561	Fee Simple Title	0.0739 Ha	977006
Lot 265 Deposited Plan 557561	Fee Simple Title	0.0585 Ha	977007
Lot 266 Deposited Plan 557561	Fee Simple Title	0.0521 Ha	977008
Lot 267 Deposited Plan 557561	Fee Simple Title	0.0763 Ha	977009
Lot 268 Deposited Plan 557561	Fee Simple Title	0.0785 Ha	977010
Lot 269 Deposited Plan 557561	Fee Simple Title	0.0758 Ha	977011
Lot 270 Deposited Plan 557561	Fee Simple Title	0.0743 Ha	977012
Lot 271 Deposited Plan 557561	Fee Simple Title	0.0702 Ha	977013
Lot 272 Deposited Plan 557561	Fee Simple Title	0.0662 Ha	977014
Lot 273 Deposited Plan 557561	Fee Simple Title	0.0572 Ha	977015
Lot 1004 Deposited Plan 557561	Vesting on Deposit for Recreation Reserve (Territorial Authority)	0.1061 Ha	989228
Lot 2020 Deposited Plan 557561	Vesting on Deposit for Road	0.3975 Ha	
Lot 2021 Deposited Plan 557561	Fee Simple Title	0.0197 Ha	Multiple
Lot 2022 Deposited Plan 557561	Vesting on Deposit for Road	1.0382 Ha	
Area AA Deposited Plan 557561	Easement		
Area A Deposited Plan 557561	Easement		
Area B Deposited Plan 557561	Easement		
Area BK Deposited Plan 557561	Easement		
Area BL Deposited Plan 557561	Easement		
Area C Deposited Plan 557561	Easement		
Area D Deposited Plan 557561	Easement		
Area E Deposited Plan 557561	Easement		
Area F Deposited Plan 557561	Easement		
Area G Deposited Plan 557561	Easement		
Area H Deposited Plan 557561	Easement		
Area I Deposited Plan 557561	Easement		
Area J Deposited Plan 557561	Easement		
Area K Deposited Plan 557561	Easement		
Area L Deposited Plan 557561	Easement		
Area M Deposited Plan 557561	Easement		

# Title Plan - LT 557561

---

## Created Parcels

Parcels	Parcel Intent	Area	RT Reference
Area N Deposited Plan 557561	Easement		
Area O Deposited Plan 557561	Easement		
Area P Deposited Plan 557561	Easement		
Area Q Deposited Plan 557561	Easement		
Area R Deposited Plan 557561	Easement		
Area S Deposited Plan 557561	Easement		
Area T Deposited Plan 557561	Easement		
Area U Deposited Plan 557561	Easement		
Area V Deposited Plan 557561	Easement		
Area W Deposited Plan 557561	Easement		
Area X Deposited Plan 557561	Easement		
Area Y Deposited Plan 557561	Easement		
Area Z Deposited Plan 557561	Easement		
Area BA Deposited Plan 557561	Easement		
Area BB Deposited Plan 557561	Easement		
Area BC Deposited Plan 557561	Easement		
Area BD Deposited Plan 557561	Easement		
Area BE Deposited Plan 557561	Easement		
Area BF Deposited Plan 557561	Easement		
Area BG Deposited Plan 557561	Easement		
Area BH Deposited Plan 557561	Easement		
Area BI Deposited Plan 557561	Easement		
Area BJ Deposited Plan 557561	Easement		
Area CA Deposited Plan 557561	Covenant - Land		
Area CB Deposited Plan 557561	Covenant - Land		
Area CC Deposited Plan 557561	Covenant - Land		
Area CD Deposited Plan 557561	Covenant - Land		
Area CT Deposited Plan 557561	Covenant - Land		
Area CE Deposited Plan 557561	Covenant - Land		
Area CF Deposited Plan 557561	Covenant - Land		
Area CG Deposited Plan 557561	Covenant - Land		
Area CH Deposited Plan 557561	Covenant - Land		
Area CI Deposited Plan 557561	Covenant - Land		
Area CJ Deposited Plan 557561	Covenant - Land		
Area CK Deposited Plan 557561	Covenant - Land		
Area CL Deposited Plan 557561	Covenant - Land		
Area CM Deposited Plan 557561	Covenant - Land		
Area CN Deposited Plan 557561	Covenant - Land		
Area CO Deposited Plan 557561	Covenant - Land		
Area CP Deposited Plan 557561	Covenant - Land		
Area CQ Deposited Plan 557561	Covenant - Land		
Area CR Deposited Plan 557561	Covenant - Land		
Area DA Deposited Plan 557561	Covenant - Land		
Area DB Deposited Plan 557561	Covenant - Land		

# Title Plan - LT 557561

---

## Created Parcels

Parcels	Parcel Intent	Area	RT Reference
Area DC Deposited Plan 557561	Covenant - Land		
Area DD Deposited Plan 557561	Covenant - Land		
Area DE Deposited Plan 557561	Covenant - Land		
Area DF Deposited Plan 557561	Covenant - Land		
Area DG Deposited Plan 557561	Covenant - Land		
Area DH Deposited Plan 557561	Covenant - Land		
Area DJ Deposited Plan 557561	Covenant - Land		
Area DL Deposited Plan 557561	Covenant - Land		
Area DN Deposited Plan 557561	Covenant - Land		
Area DP Deposited Plan 557561	Covenant - Land		
Area DR Deposited Plan 557561	Covenant - Land		
Area DT Deposited Plan 557561	Covenant - Land		
Area DV Deposited Plan 557561	Covenant - Land		
Area DX Deposited Plan 557561	Covenant - Land		
Area DZ Deposited Plan 557561	Covenant - Land		
Area EB Deposited Plan 557561	Covenant - Land		
Area ED Deposited Plan 557561	Covenant - Land		
Area EF Deposited Plan 557561	Covenant - Land		
Area EH Deposited Plan 557561	Covenant - Land		
Area EJ Deposited Plan 557561	Covenant - Land		
Area EL Deposited Plan 557561	Covenant - Land		
Area EN Deposited Plan 557561	Covenant - Land		
Area EP Deposited Plan 557561	Covenant - Land		
Area ER Deposited Plan 557561	Covenant - Land		
Area ET Deposited Plan 557561	Covenant - Land		
Area EV Deposited Plan 557561	Covenant - Land		
Area EW Deposited Plan 557561	Covenant - Land		
Area EX Deposited Plan 557561	Covenant - Land		
Area EY Deposited Plan 557561	Covenant - Land		
Area FA Deposited Plan 557561	Covenant - Land		
Area FB Deposited Plan 557561	Covenant - Land		
Area FC Deposited Plan 557561	Covenant - Land		
Area FD Deposited Plan 557561	Covenant - Land		
Area FE Deposited Plan 557561	Covenant - Land		
Area FF Deposited Plan 557561	Covenant - Land		
Area FG Deposited Plan 557561	Covenant - Land		
Area FH Deposited Plan 557561	Covenant - Land		
Area FI Deposited Plan 557561	Covenant - Land		
Area FJ Deposited Plan 557561	Covenant - Land		
Area FK Deposited Plan 557561	Covenant - Land		
Area FL Deposited Plan 557561	Covenant - Land		
Area FM Deposited Plan 557561	Covenant - Land		
Area FN Deposited Plan 557561	Covenant - Land		
Area FO Deposited Plan 557561	Covenant - Land		



# Title Plan - LT 557561

---

## Created Parcels

Parcels	Parcel Intent	Area	RT Reference
Area FP Deposited Plan 557561	Covenant - Land		
Area FQ Deposited Plan 557561	Covenant - Land		
Area FR Deposited Plan 557561	Covenant - Land		
Area FS Deposited Plan 557561	Covenant - Land		
Lot 1510 Deposited Plan 557561	Fee Simple Title	1.4368 Ha	991905
Area BM Deposited Plan 557561	Easement		
<b>Total Area</b>		<hr/> 7.4227 Ha	



**DP 557561**

**SCHEDULE OF EASEMENTS IN GROSS**

Purpose	Shown as	Burdened Land	Grantee
Right to drain water and sewage, Right to convey water	BM	Lot 2021 Hereon	Porirua City Council
Right to convey electricity			Wellington Electricity Lines Limited
Right to convey gas			Powerco Limited
Right to convey telecommunications			Chorus New Zealand Limited

**SCHEDULE OF EASEMENTS**

Purpose	Shown as	Burdened Land	Benefited Land
Party Wall	C	Lot 174 Hereon	Lot 175 Hereon
	D	Lot 175 Hereon	Lot 174 Hereon
	E	Lot 176 Hereon	Lot 177 Hereon
	F	Lot 177 Hereon	Lot 176 Hereon
	G	Lot 214 Hereon	Lot 215 Hereon
	H	Lot 215 Hereon	Lot 214 Hereon
	I	Lot 216 Hereon	Lot 217 Hereon
	J	Lot 217 Hereon	Lot 216 Hereon
	K	Lot 218 Hereon	Lot 219 Hereon
	L	Lot 219 Hereon	Lot 218 Hereon
	M	Lot 220 Hereon	Lot 221 Hereon
	N	Lot 221 Hereon	Lot 220 Hereon
	O	Lot 207 Hereon	Lot 208 Hereon
	P	Lot 208 Hereon	Lot 207 Hereon
	Q	Lot 208 Hereon	Lot 209 Hereon
	R	Lot 209 Hereon	Lot 208 Hereon
	S	Lot 209 Hereon	Lot 210 Hereon
	T	Lot 210 Hereon	Lot 209 Hereon
	U	Lot 210 Hereon	Lot 211 Hereon
	V	Lot 211 Hereon	Lot 210 Hereon
	W	Lot 211 Hereon	Lot 212 Hereon
	X	Lot 212 Hereon	Lot 211 Hereon
Y	Lot 212 Hereon	Lot 213 Hereon	
Z	Lot 213 Hereon	Lot 212 Hereon	
BA	Lot 201 Hereon	Lot 202 Hereon	
BB	Lot 202 Hereon	Lot 201 Hereon	

	BC	Lot 202 Hereon	Lot 203 Hereon
	BD	Lot 203 Hereon	Lot 202 Hereon
	BE	Lot 203 Hereon	Lot 204 Hereon
	BF	Lot 204 Hereon	Lot 203 Hereon
	BG	Lot 204 Hereon	Lot 205 Hereon
	BH	Lot 205 Hereon	Lot 204 Hereon
	BI	Lot 205 Hereon	Lot 206 Hereon
	BJ	Lot 206 Hereon	Lot 205 Hereon





**DP 557561**

**MEMORANDUM OF EASEMENTS IN GROSS**

Purpose	Shown as	Burdened Land	Grantee
Right to Drain Water	AA	Lot 224 Hereon	Porirua City Council
Right to Drain Water	A	Lot 225 Hereon	Porirua City Council
Right to Drain Water	B, BK, BL	Lot 233 Hereon	Porirua City Council

**MEMORANDUM OF RESTRICTIVE COVENANTS**

Purpose	Shown as	Burdened Land	Description
Planting	CA	Lot 230 Hereon	Subject to a restrictive covenant for planting purposes
	CB	Lot 231 Hereon	
	CC	Lot 232 Hereon	
	CD	Lot 233 Hereon	
	CT	Lot 233 Hereon	
	CE	Lot 234 Hereon	
	CF	Lot 235 Hereon	
	CG	Lot 236 Hereon	
	CH	Lot 237 Hereon	
	CI	Lot 238 Hereon	
	CJ	Lot 239 Hereon	
	CK	Lot 240 Hereon	
	CL	Lot 241 Hereon	
	CM	Lot 243 Hereon	
	CN	Lot 244 Hereon	
	CO	Lot 245 Hereon	
	CP	Lot 246 Hereon	
CQ	Lot 247 Hereon		
CR	Lot 248 Hereon		
Geotech	DA	Lot 256 Hereon	Subject to a restrictive covenant for specific house design
	DB	Lot 255 Hereon	
	DC	Lot 254 Hereon	
	DD	Lot 253 Hereon	
	DE	Lot 252 Hereon	
	DF	Lot 251 Hereon	

<b>Geotech</b>	DG	Lot 250 Hereon	Subject to a restrictive covenant for specific house design
	DH	Lot 249 Hereon	
	DJ, CR	Lot 248 Hereon	
	DL, CQ	Lot 247 Hereon	
	DN, CP	Lot 246 Hereon	
	DP, CO	Lot 245 Hereon	
	DR, CN	Lot 244 Hereon	
	DT, CM	Lot 243 Hereon	
	DV, CL	Lot 241 Hereon	
	DX, CK	Lot 240 Hereon	
	DZ, CJ	Lot 239 Hereon	
	EB, CI	Lot 238 Hereon	
	ED, CH	Lot 237 Hereon	
	EF, CG	Lot 236 Hereon	
	EH, CF	Lot 235 Hereon	
	EJ, CE	Lot 234 Hereon	
	EL, EN, CD, CT	Lot 233 Hereon	
	EP, CC	Lot 232 Hereon	
	ER, CB	Lot 231 Hereon	
	ET, CA	Lot 230 Hereon	
	EV	Lot 228 Hereon	
	EW	Lot 227 Hereon	
	EX	Lot 226 Hereon	
	EY	Lot 225 Hereon	
	FA	Lot 258 Hereon	
	FB	Lot 259 Hereon	
	FC	Lot 260 Hereon	
	FD	Lot 261 Hereon	
	FE	Lot 262 Hereon	
	FF	Lot 263 Hereon	
	FG	Lot 265 Hereon	
	FH	Lot 266 Hereon	
FI	Lot 267 Hereon		
FJ	Lot 268 Hereon		
FK	Lot 269 Hereon		
FL	Lot 270 Hereon		
FM	Lot 271 Hereon		
FN	Lot 272 Hereon		
FO	Lot 273 Hereon		

<b>Geotech</b>	FP	Lot 206 Hereon	Subject to a restrictive covenant for specific house design
	FQ	Lot 205 Hereon	
	FR	Lot 204 Hereon	
	FS	Lot 203 Hereon	



**CALIBRE CONSULTING LTD**

PO Box 6643 ; Wellington 6041  
Level 13, Kordia House ; 109 - 125 Willis Street  
Te Aro ; Wellington 6011  
+64 4 384 2029 ; [www.calibregroup.com](http://www.calibregroup.com)

**DP 557561**

**AMALGAMATION CONDITIONS**

That Lot 2021 (Legal Access) be held as to six undivided one sixth shares by the owners of lots of Lots 178, 179, 180, 181, 182 and 183 Hereon as tenants in common in the said shares and that computer freehold registers be issued in accordance therewith.



CALIBRE CONSULTING LTD

PO Box 6643 ; Wellington 6041  
 Level 13, Kordia House ; 109 - 125 Willis Street  
 Te Aro ; Wellington 6011  
 +64 4 384 2029 ; www.calibregroup.com

**DP 557561**

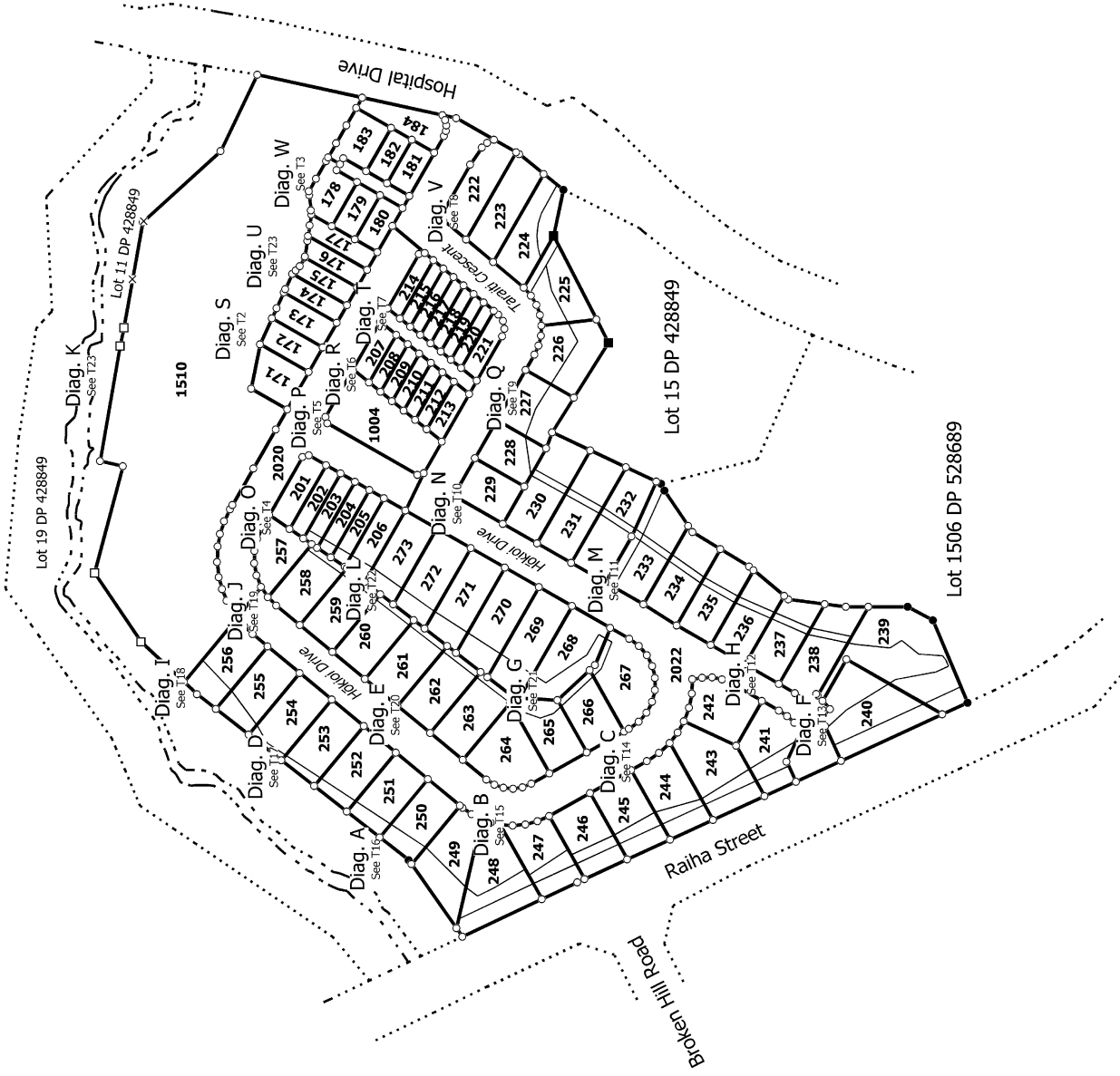
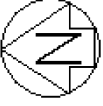
**SCHEDULE OF EXISTING AREAS SUBJECT TO A CONSENT NOTICE TO BE EXTINGUISHED AND CANCELLED**

Purpose	Shown as	Burdened Land	Description	Creating Document
Consent Notice (Hazard)	CR DP 528689	Lot 1508 DP 528689	Above ground diesel tank	8475256.9

**Notes:**

**Appurtenant easements to be partially surrendered:**

Right to Drain Water marked Z2 DP 428849 partially surrendered with Lot 1507 DP 528689 as benefited land



T 1/23

Land District: Wellington

**Digitally Generated Plan**

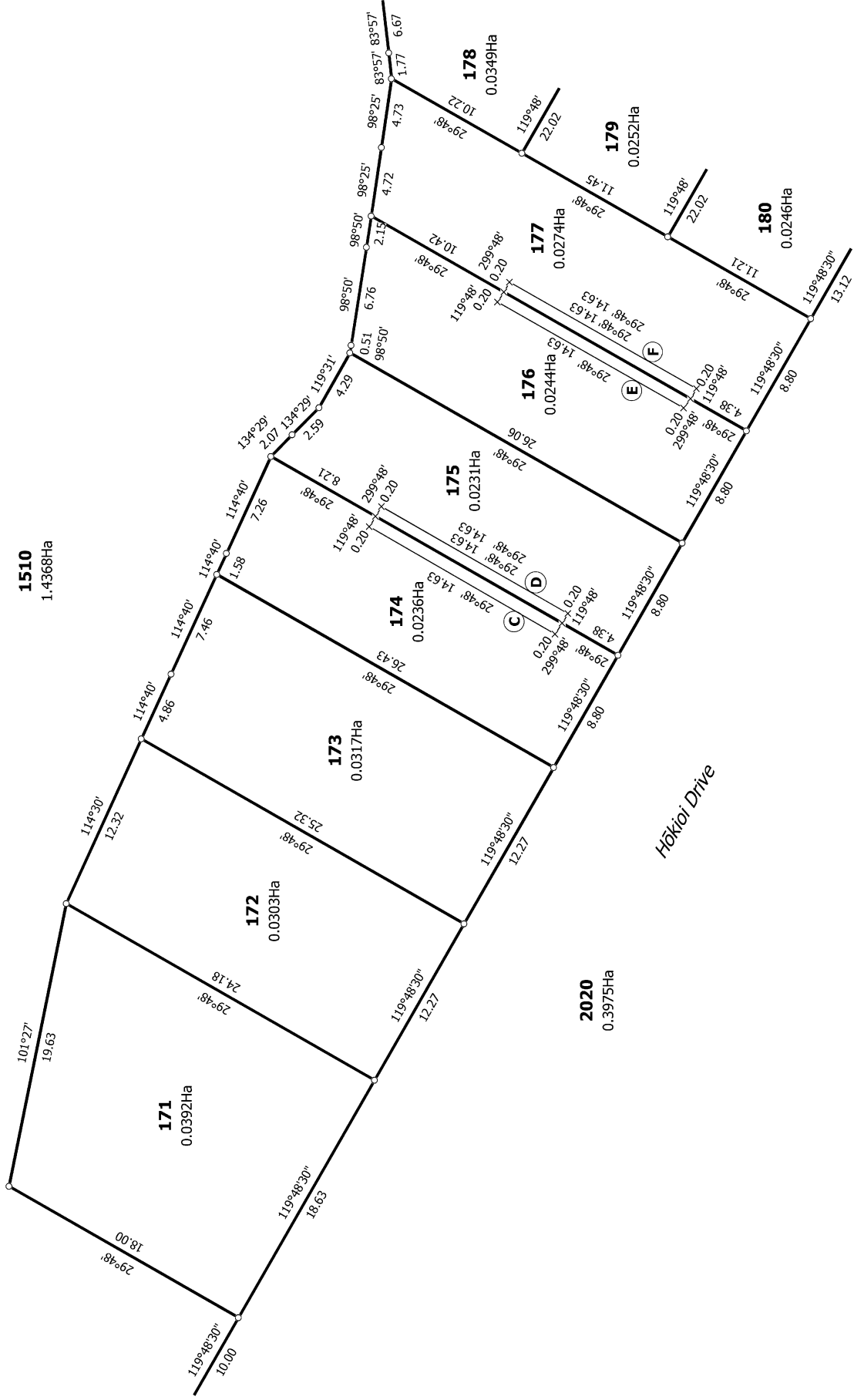
Generated on: 07/07/2021 3:13pm Page 14 of 36

**Lots 171 to 184, 201 to 273, 1004, 1510 and 2020 to 2022 Being a Subdivision of Lot 1508 DP 528689.**

Surveyor: Brett Douglas Gawn  
Firm: Callibre Consulting Limited

**Title Plan  
LT 557561  
DRAFT**

Diag. S



T 2/23

Land District: Wellington

**Digitally Generated Plan**

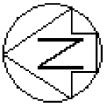
Generated on: 07/07/2021 3:13pm Page 15 of 36

**Lots 171 to 184, 201 to 273, 1004, 1510 and 2020 to 2022 Being a Subdivision**

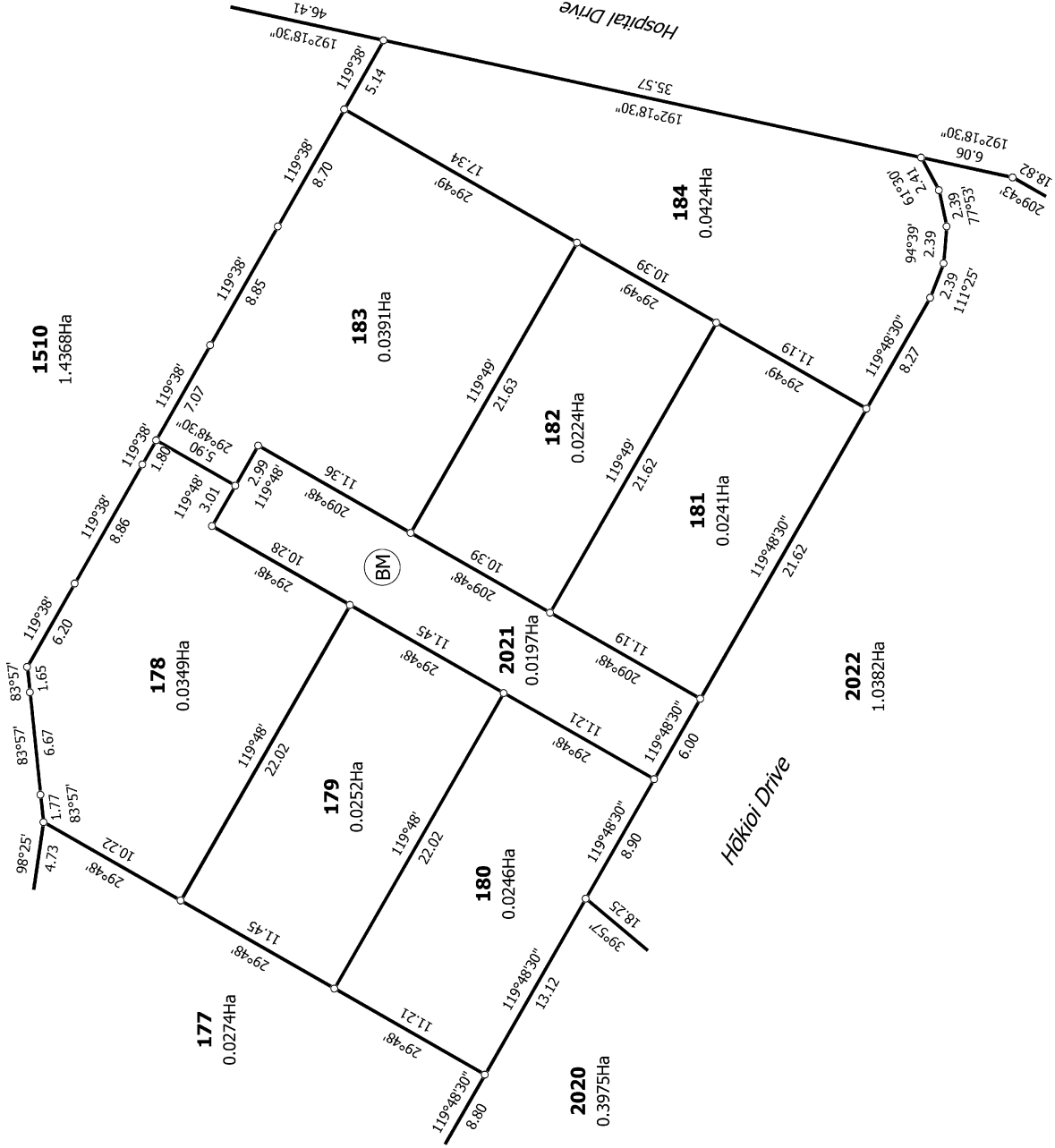
**of Lot 1508 DP 528689.**

Surveyor: Brett Douglas Gawn  
Firm: Callibre Consulting Limited

**Title Plan  
LT 557561  
DRAFT**



Diag. W



T 3/23

Land District: Wellington

Digitally Generated Plan

Generated on: 01/07/2021 3:13pm Page 16 of 36

Lots 171 to 184, 201 to 273, 1004, 1510 and 2020 to 2022 Being a Subdivision of Lot 1508 DP 528689.

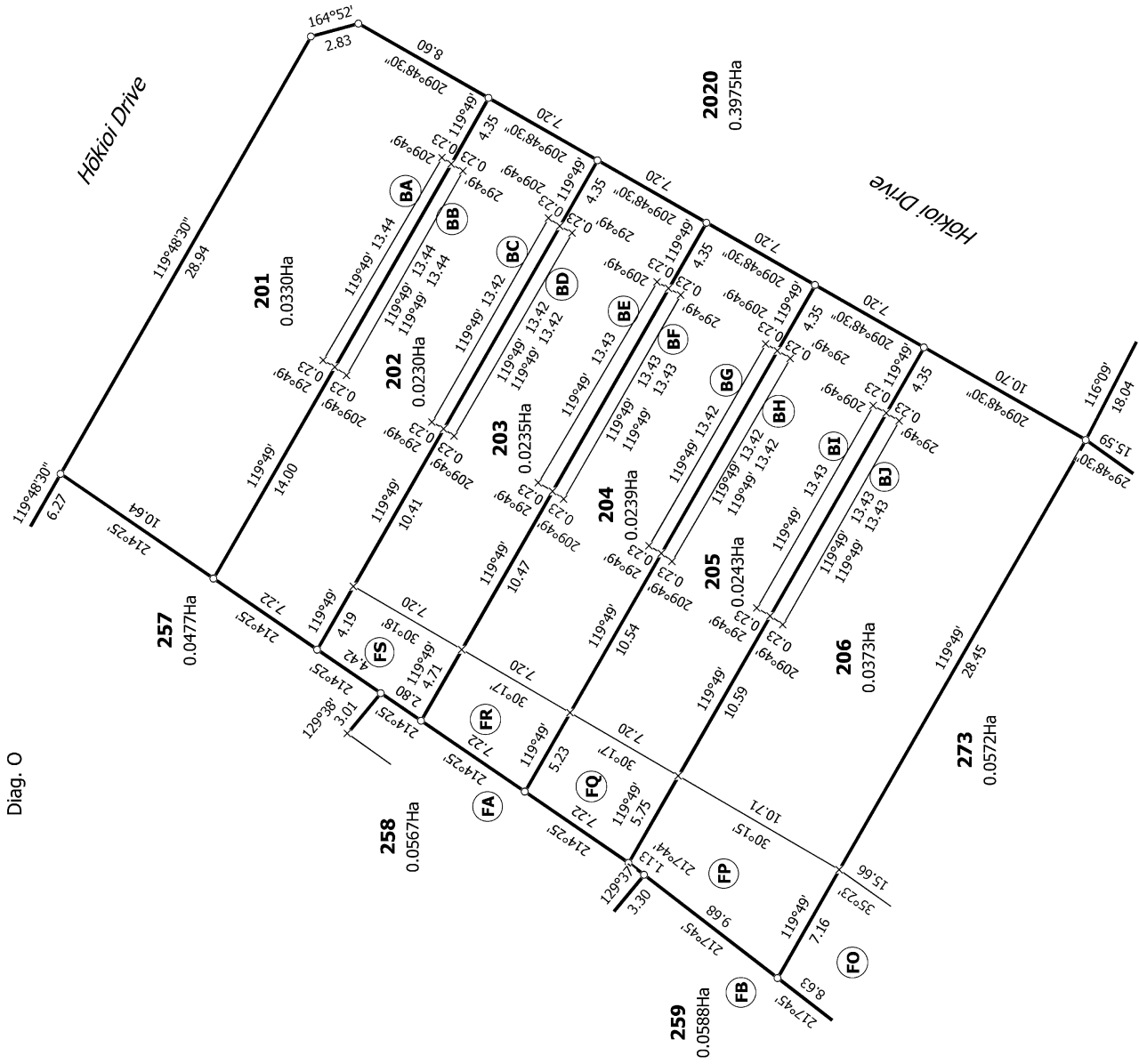
Surveyor: Brett Douglas Gawn  
Firm: Calibre Consulting Limited

Title Plan  
LT 557561  
DRAFT





Diag. O



T 4/23

Land District: Wellington

Digitally Generated Plan

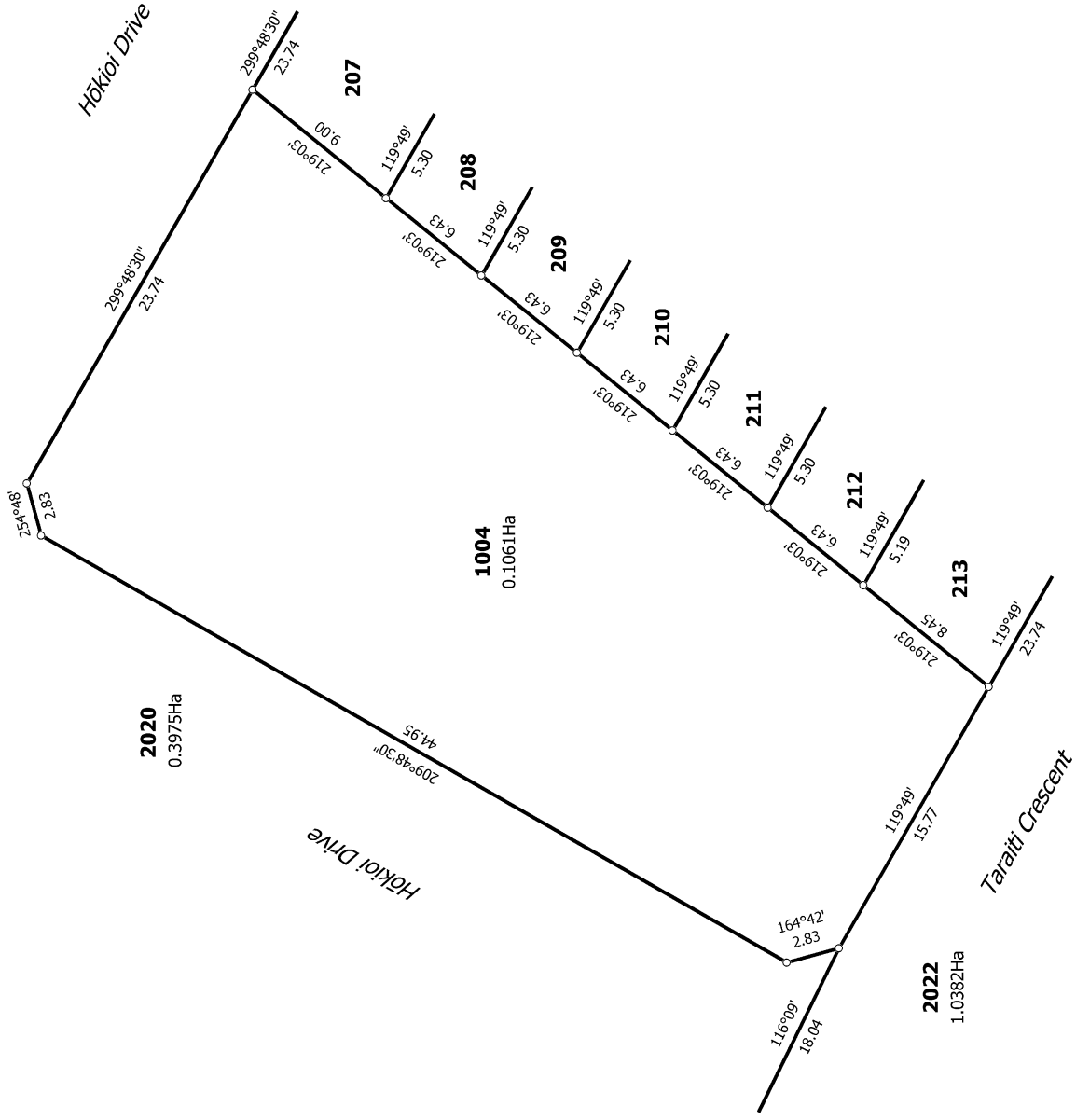
Generated on: 07/07/2021 3:13pm Page 17 of 36

Lots 171 to 184, 201 to 273, 1004, 1510 and 2020 to 2022 Being a Subdivision of Lot 1508 DP 528689.

Surveyor: Brett Douglas Gawn  
Firm: Calibre Consulting Limited

Title Plan  
LT 557561  
DRAFT

Diag. P



T 5/23

Title Plan  
LT 557561  
DRAFT

Surveyor: Brett Douglas Gawn  
Firm: Calibre Consulting Limited

Lots 171 to 184, 201 to 273, 1004, 1510 and 2020 to 2022 Being a Subdivision  
of Lot 1508 DP 528689.

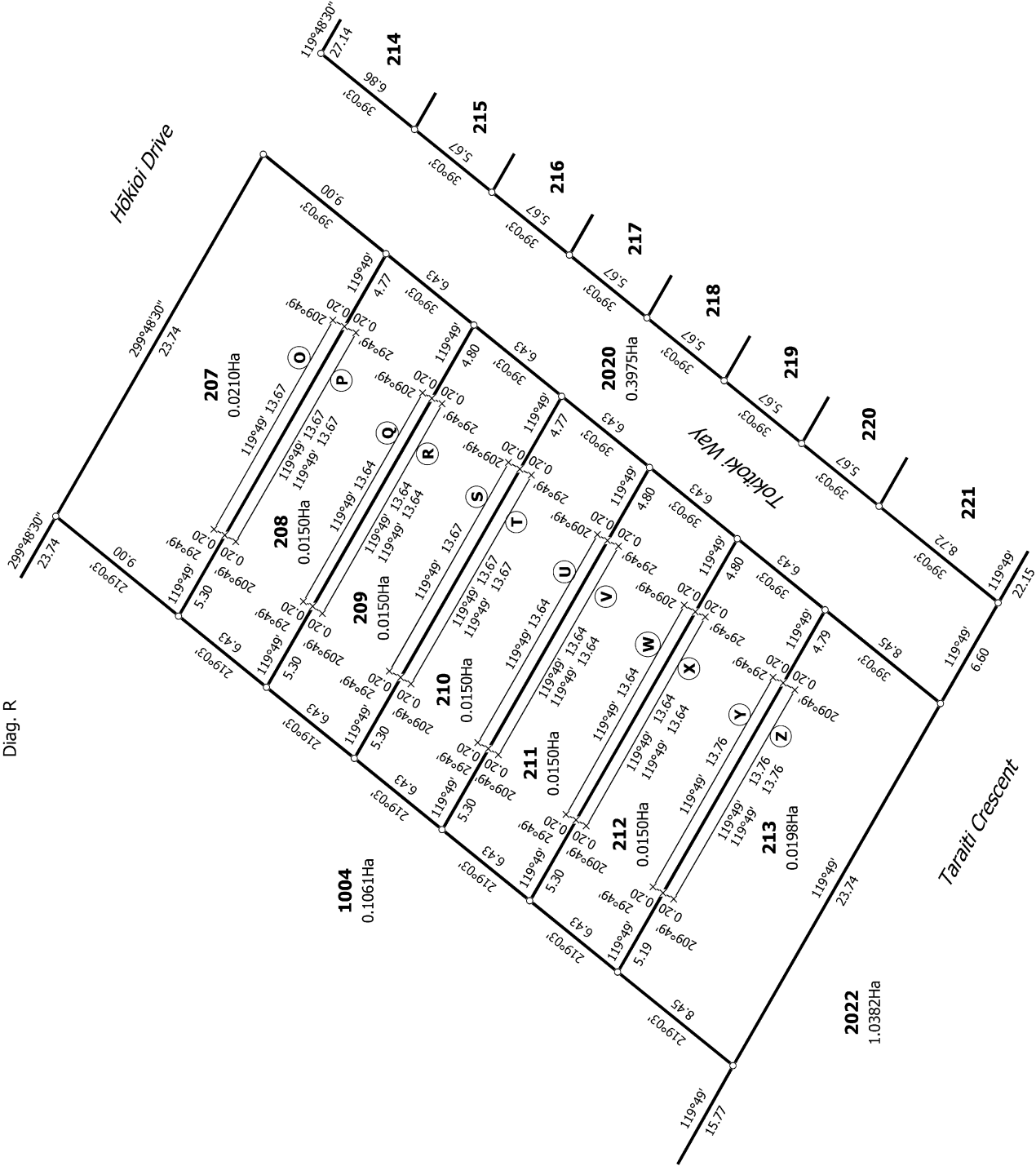
Land District: Wellington

Digitally Generated Plan

Generated on: 07/07/2021 3:13pm Page 18 of 36



Diag. R



T 6/23

Land District: Wellington

Digitally Generated Plan

Generated on: 01/07/2021 3:13pm Page 19 of 36

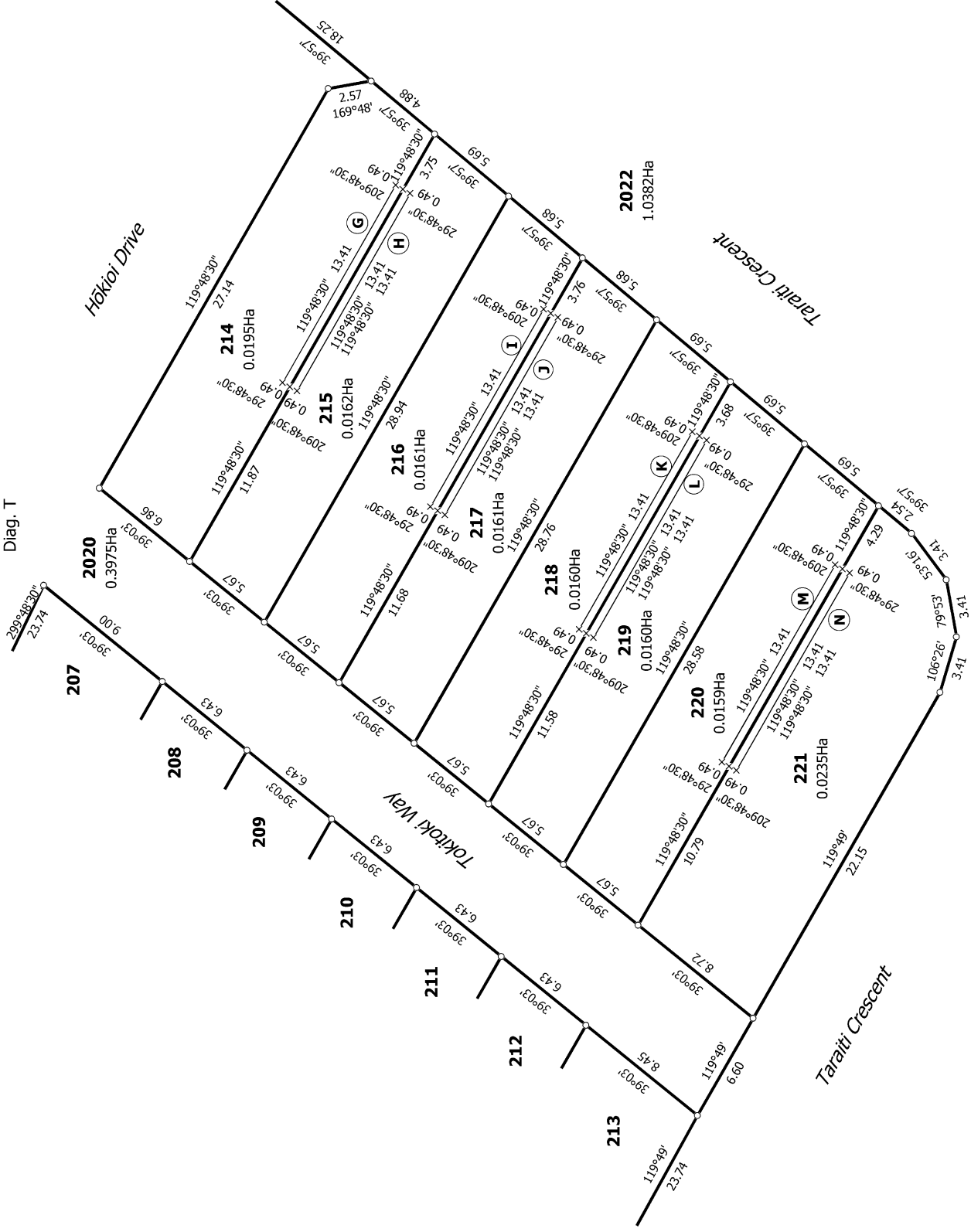
Lots 171 to 184, 201 to 273, 1004, 1510 and 2020 to 2022 Being a Subdivision of Lot 1508 DP 528689.

Surveyor: Brett Douglas Gawn  
Firm: Calibre Consulting Limited

Title Plan  
LT 557561  
DRAFT



Diag. T



T 7/23

Title Plan  
LT 557561  
DRAFT

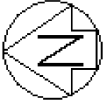
Surveyor: Brett Douglas Gawn  
Firm: Calibre Consulting Limited

Lots 171 to 184, 201 to 273, 1004, 1510 and 2020 to 2022 Being a Subdivision  
of Lot 1508 DP 528689.

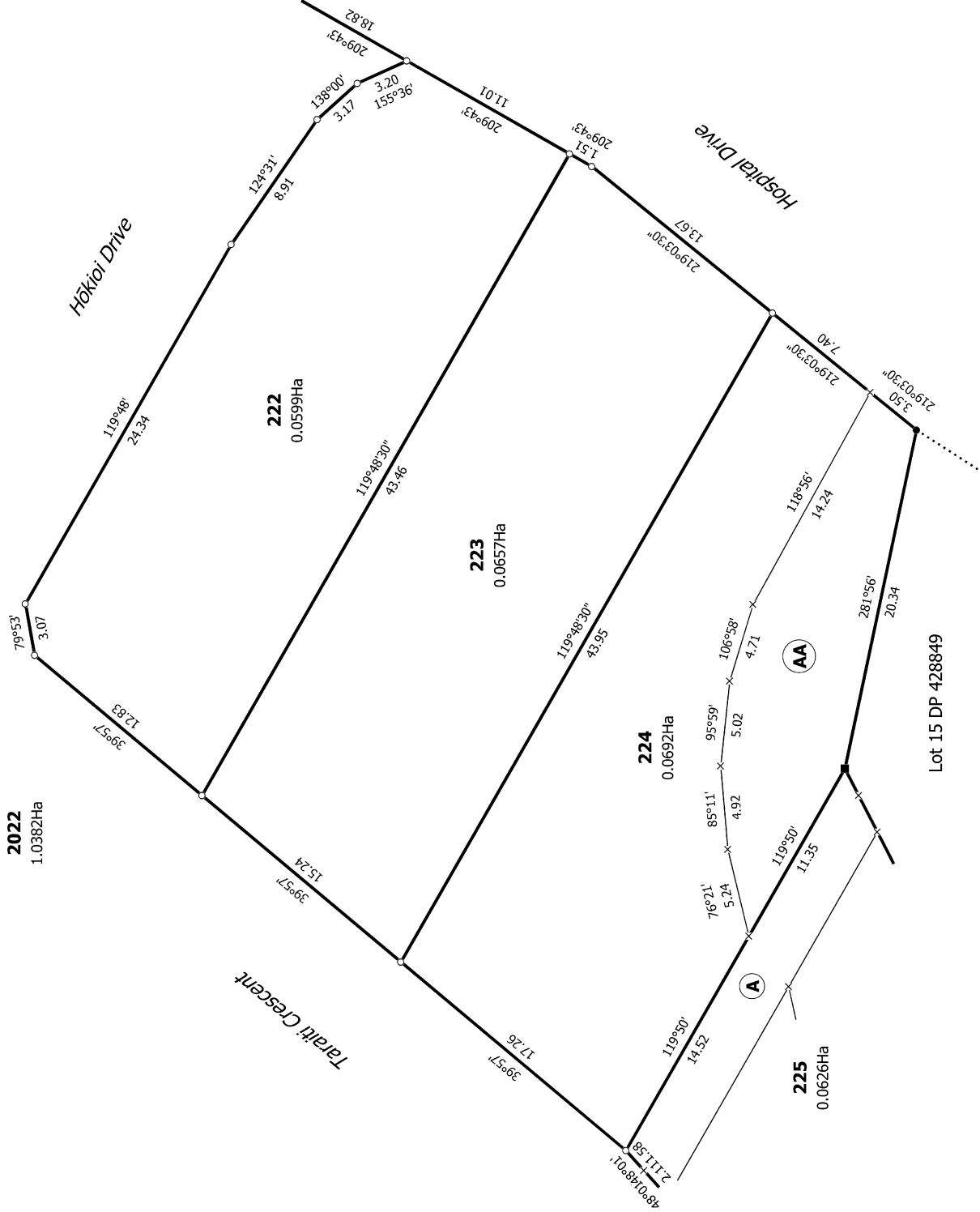
Land District: Wellington

Digitally Generated Plan

Generated on: 07/07/2021 3:13pm Page 20 of 36



Diag. V



T 8/23

Title Plan  
LT 557561  
DRAFT

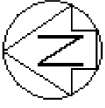
Surveyor: Brett Douglas Gawn  
Firm: Callibre Consulting Limited

Lots 171 to 184, 201 to 273, 1004, 1510 and 2020 to 2022 Being a Subdivision  
of Lot 1508 DP 528689.

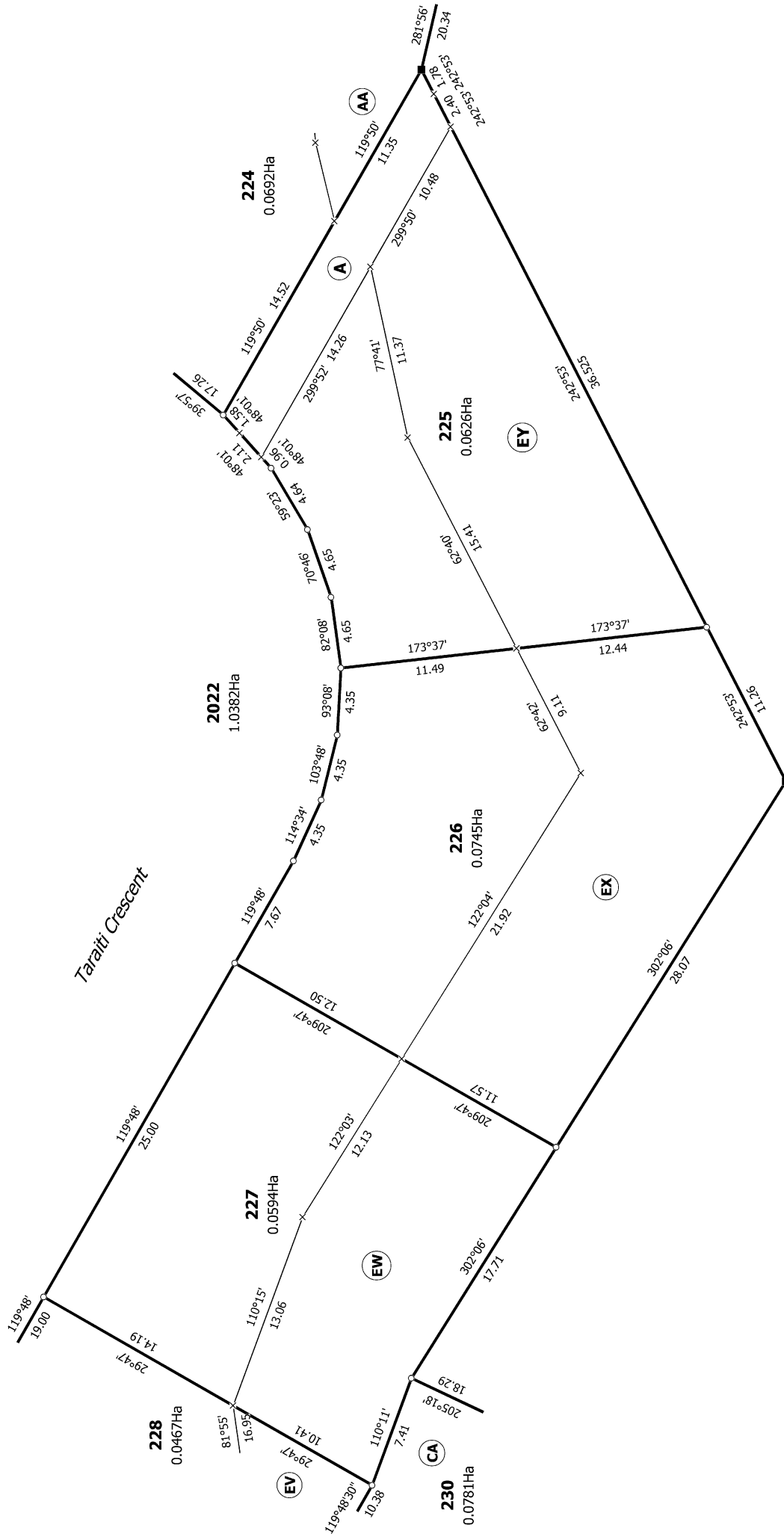
Land District: Wellington

Digitally Generated Plan

Generated on: 07/07/2021 3:13pm Page 21 of 36



Diag. Q



Lot 15 DP 428849

T 9/23

Land District: Wellington

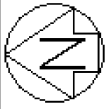
**Digitally Generated Plan**

Generated on: 07/07/2021 3:13pm Page 22 of 36

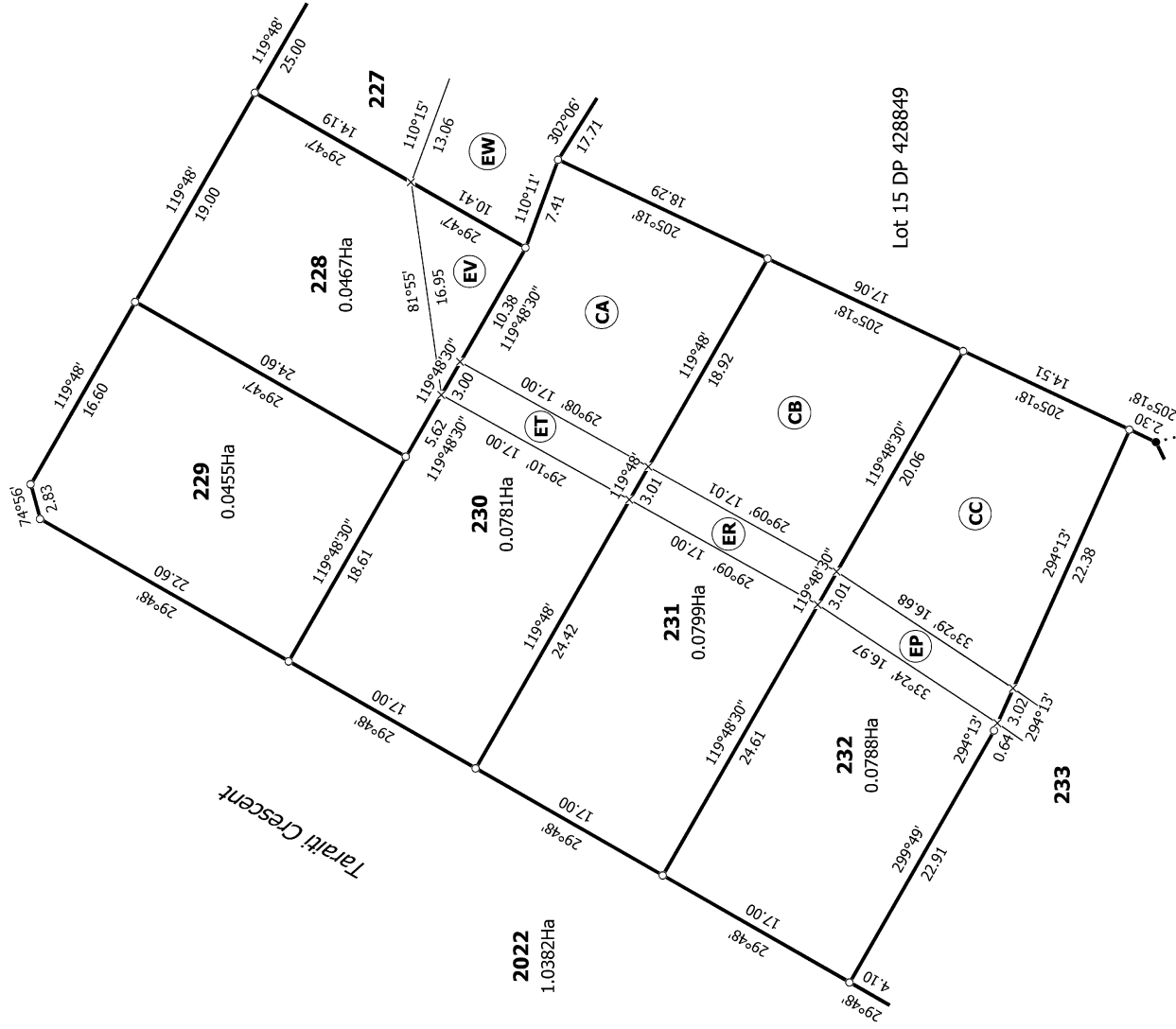
**Lots 171 to 184, 201 to 273, 1004, 1510 and 2020 Being a Subdivision of Lot 1508 DP 528689.**

Surveyor: Brett Douglas Gawn  
Firm: Callibre Consulting Limited

**Title Plan  
LT 557561  
DRAFT**



Diag. N



T 10/23

Land District: Wellington

**Digitally Generated Plan**

Generated on: 07/07/2021 3:13pm Page 23 of 36

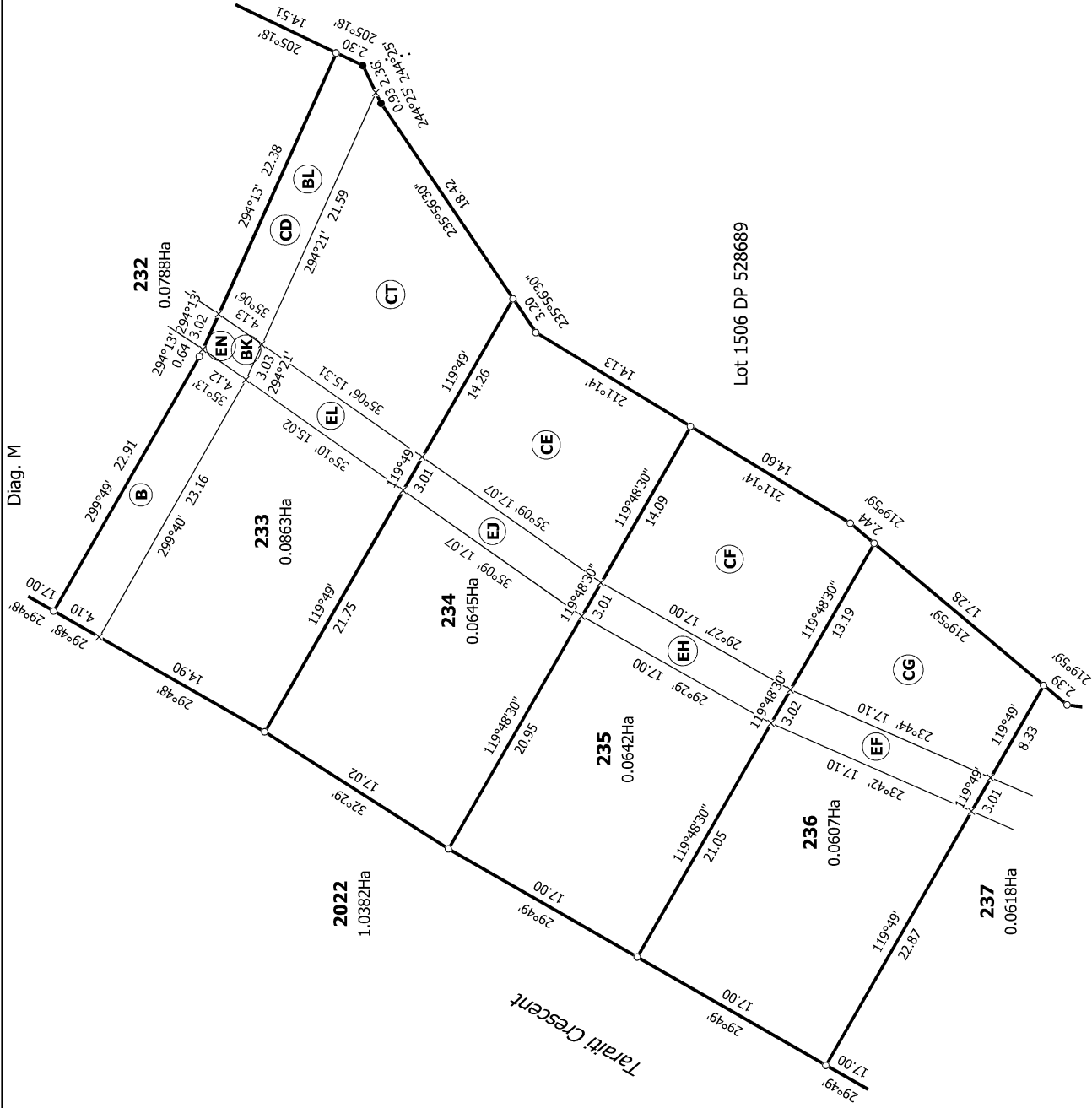
**Lots 171 to 184, 201 to 273, 1004, 1510 and 2020 to 2022 Being a Subdivision of Lot 1508 DP 528689.**

Surveyor: Brett Douglas Gawn  
Firm: Calibre Consulting Limited

**Title Plan  
LT 557561  
DRAFT**



Diag. M



T 11/23

Land District: Wellington

**Digitally Generated Plan**

Generated on: 07/07/2021 3:13pm Page 24 of 36

**Lots 171 to 184, 201 to 273, 1004, 1510 and 2020 to 2022 Being a Subdivision of Lot 1508 DP 528689.**

Surveyor: Brett Douglas Gawn  
Firm: Callibre Consulting Limited

**Title Plan  
LT 557561  
DRAFT**

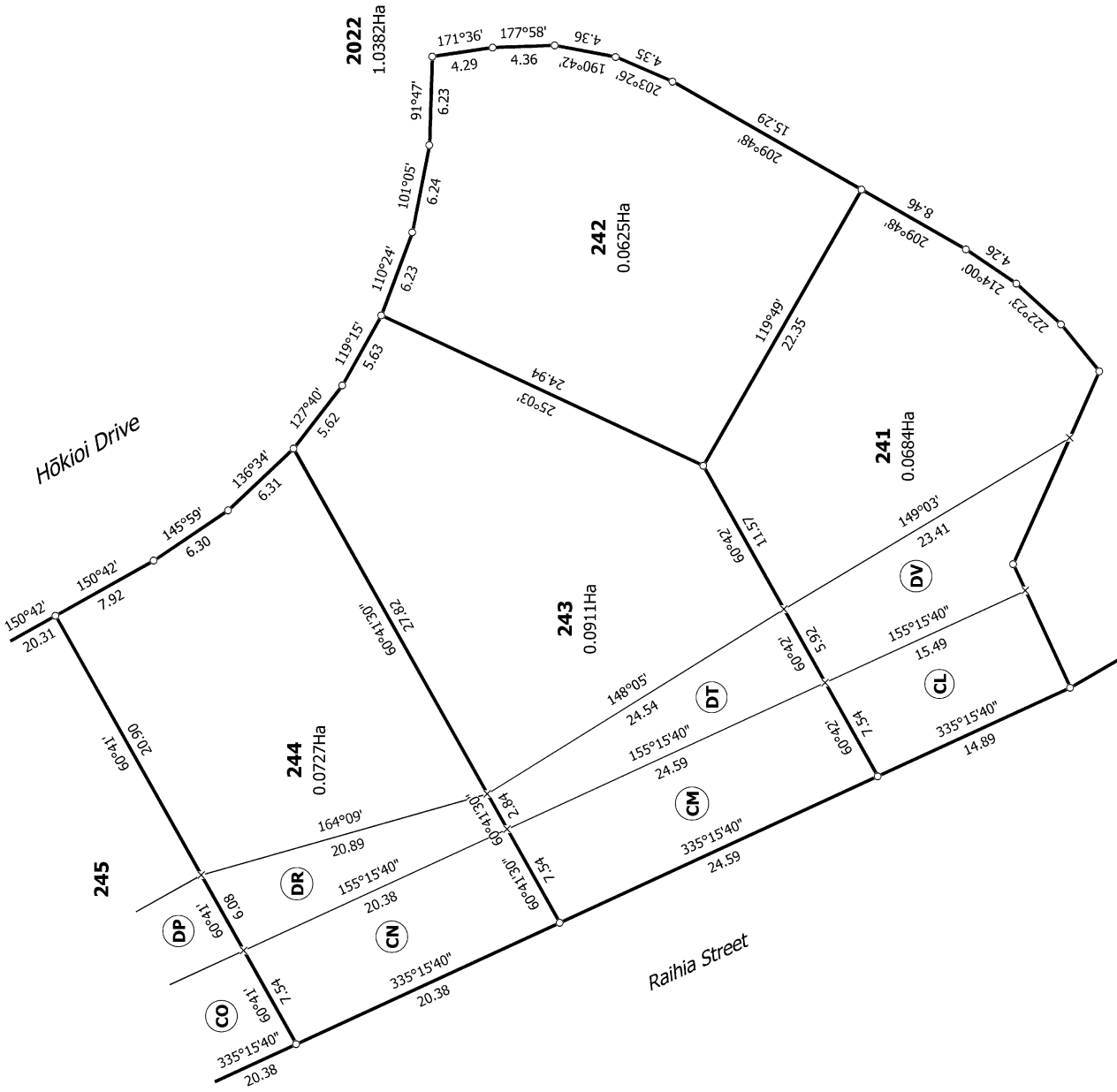








Diag. C



T 14/23

Land District: Wellington

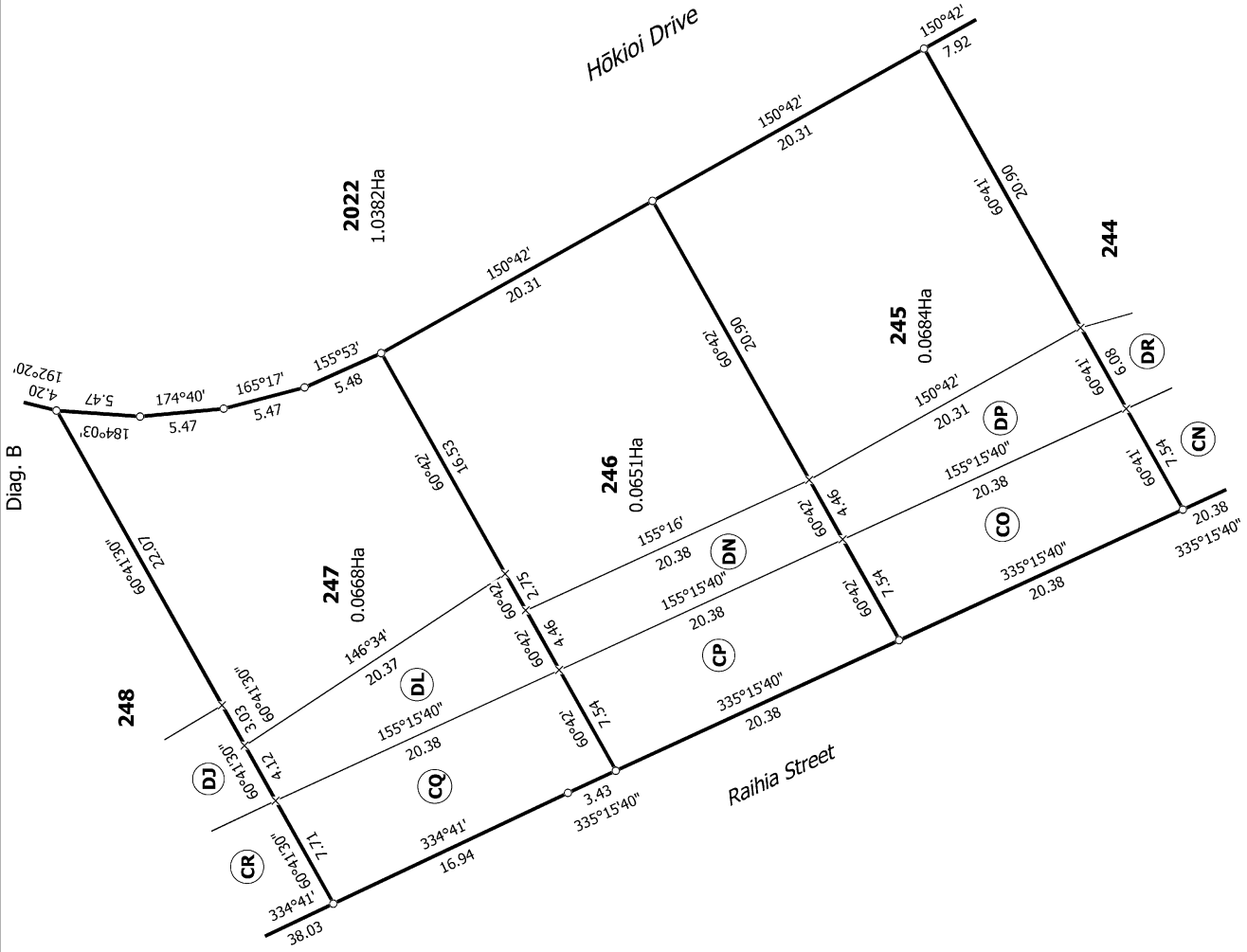
**Digitally Generated Plan**

Generated on: 07/07/2021 3:13pm Page 27 of 36

**Lots 171 to 184, 201 to 273, 1004, 1510 and 2020 to 2022 Being a Subdivision of Lot 1508 DP 528689.**

Surveyor: Brett Douglas Gawn  
Firm: Calibre Consulting Limited

**Title Plan  
LT 557561  
DRAFT**



T 15/23

Title Plan  
LT 557561  
DRAFT

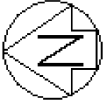
Surveyor: Brett Douglas Gawn  
Firm: Calibre Consulting Limited

Lots 171 to 184, 201 to 273, 1004, 1510 and 2020 to 2022 Being a Subdivision  
of Lot 1508 DP 528689.

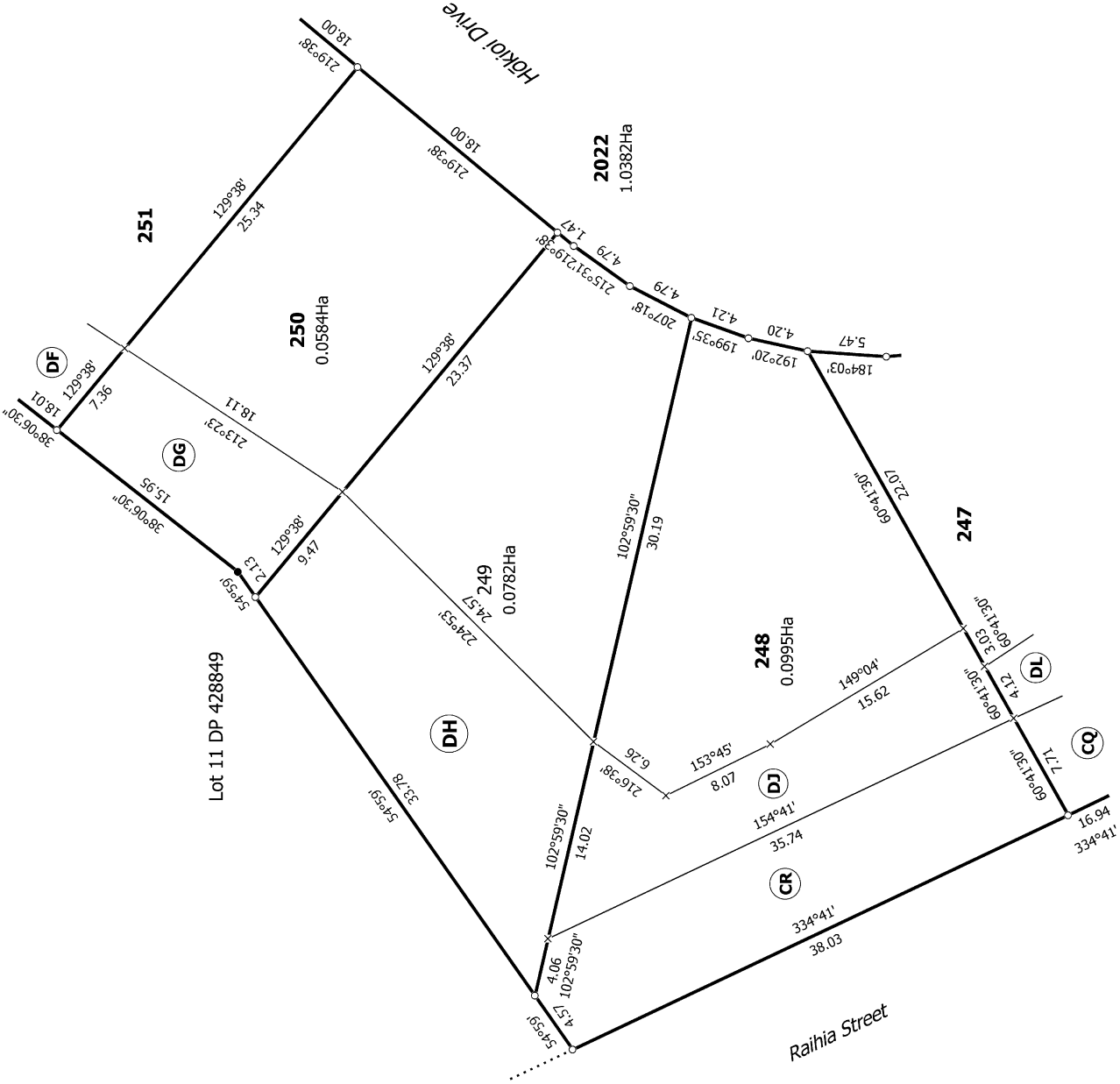
Land District: Wellington

**Digitally Generated Plan**

Generated on: 07/07/2021 3:13pm Page 28 of 36



Diag. A



Lot 11 DP 428849

T 16/23

Land District: Wellington

**Digitally Generated Plan**

Generated on: 07/07/2021 3:13pm Page 29 of 36

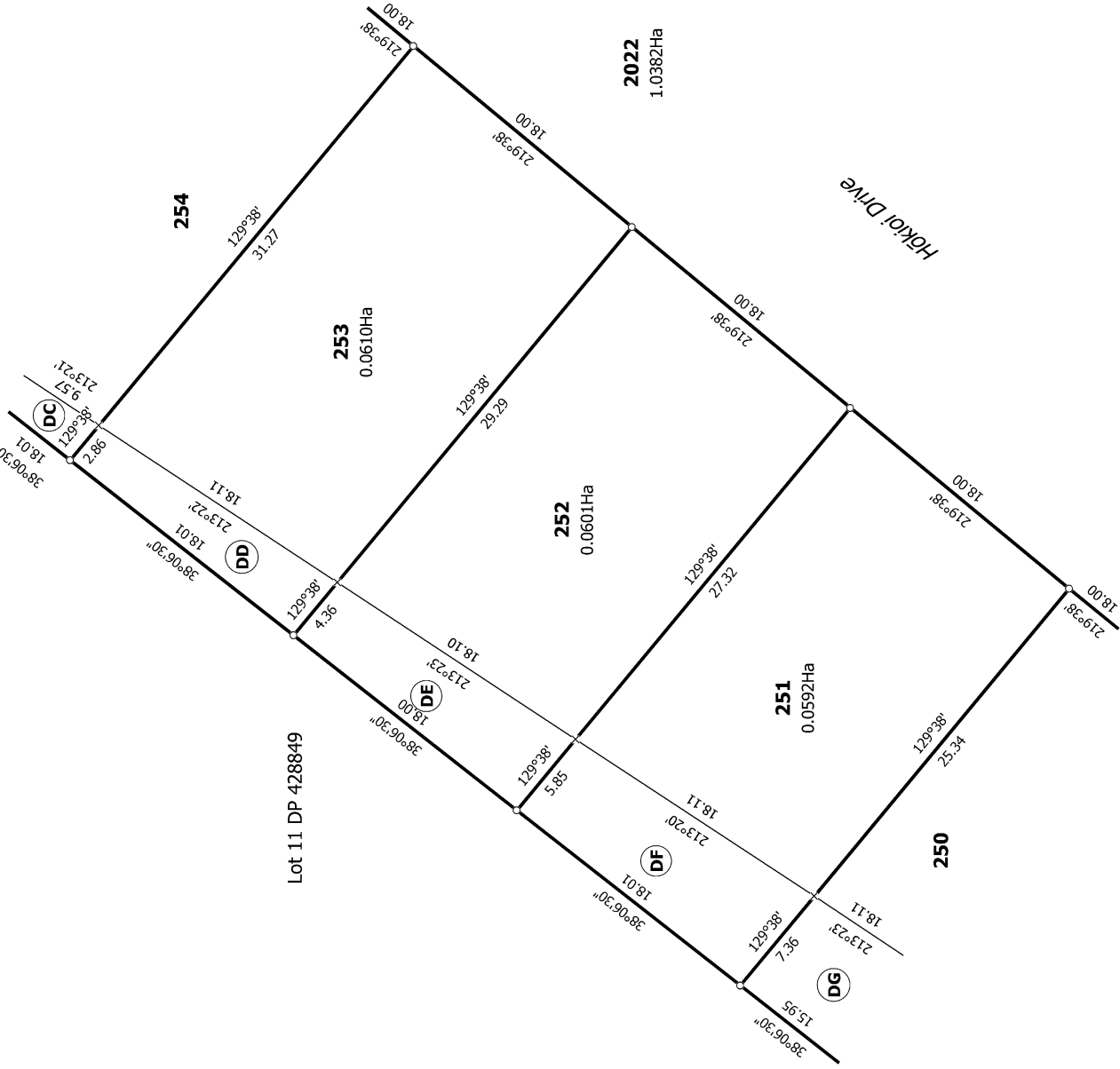
**Lots 171 to 184, 201 to 273, 1004, 1510 and 2020 to 2022 Being a Subdivision of Lot 1508 DP 528689.**

Surveyor: Brett Douglas Gawn  
Firm: Calibre Consulting Limited

**Title Plan  
LT 557561  
DRAFT**



Diag. D



T 17/23

Land District: Wellington

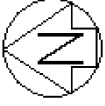
**Digitally Generated Plan**

Generated on: 07/07/2021 3:13pm Page 30 of 36

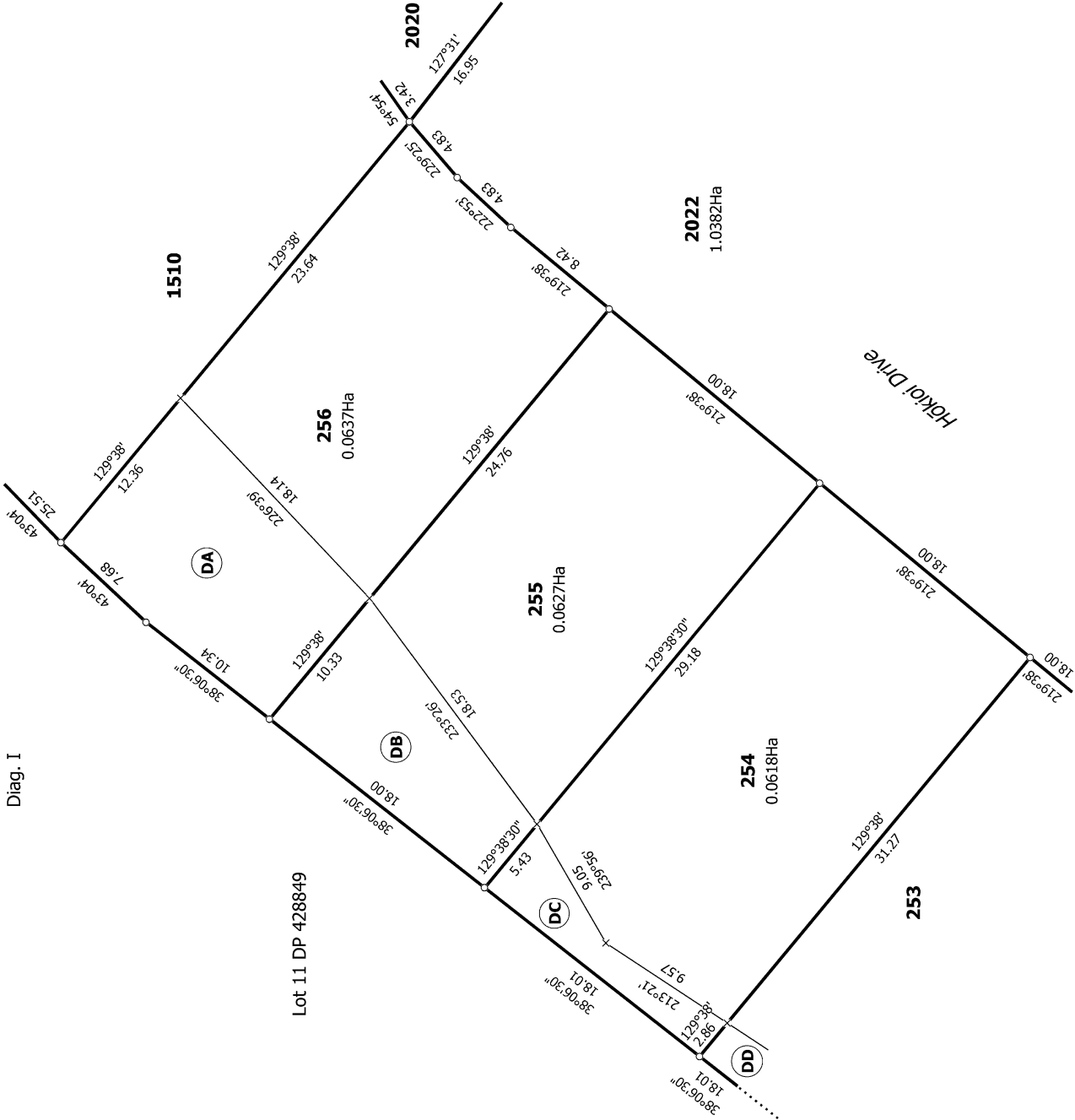
Lots 171 to 184, 201 to 273, 1004, 1510 and 2020 to 2022 Being a Subdivision  
of Lot 1508 DP 528689.

Surveyor: Brett Douglas Gawn  
Firm: Calibre Consulting Limited

Title Plan  
LT 557561  
DRAFT



Diag. I



T 18/23

Land District: Wellington

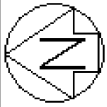
**Digitally Generated Plan**

Generated on: 07/07/2021 3:13pm Page 31 of 36

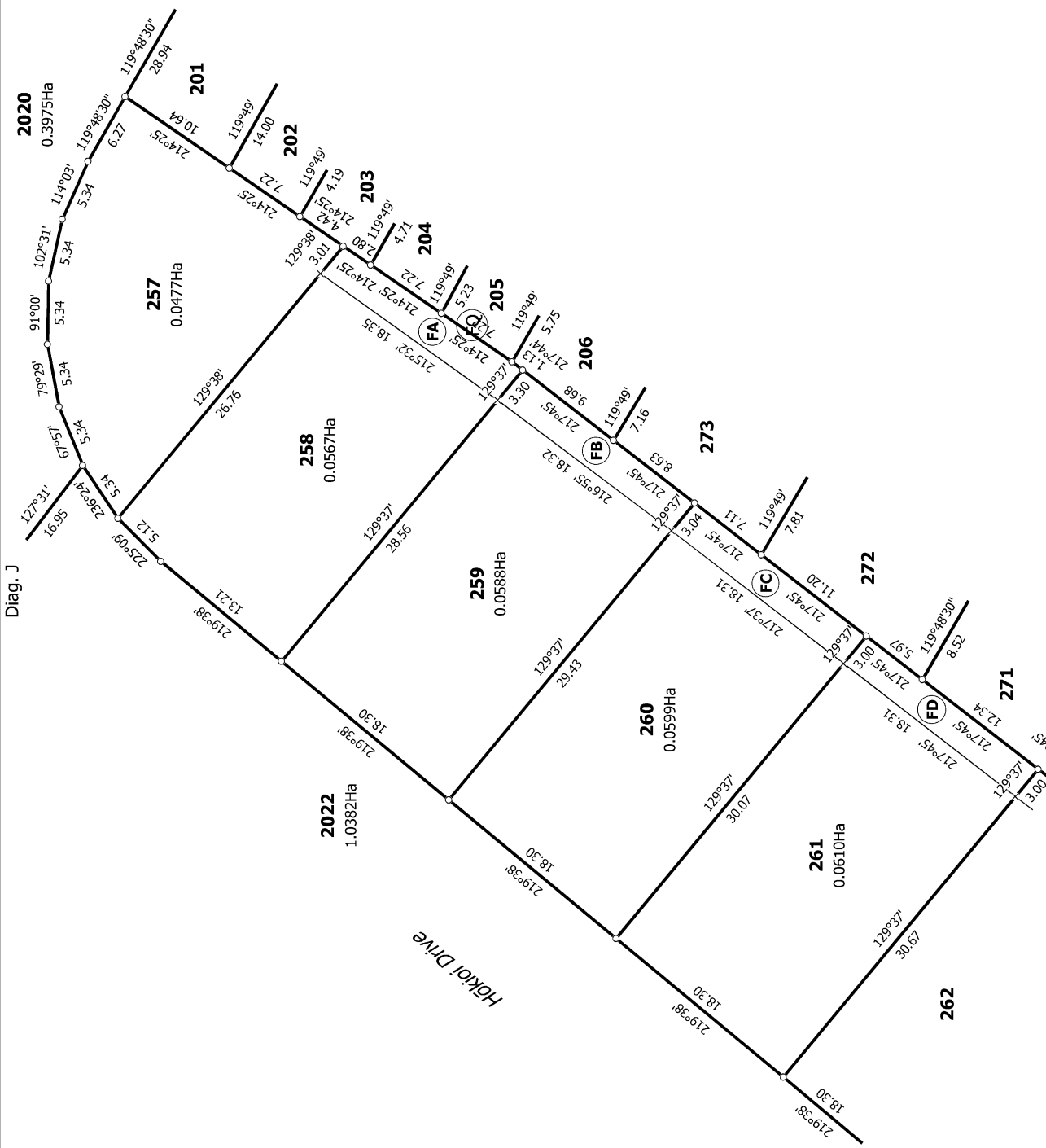
Lots 171 to 184, 201 to 273, 1004, 1510 and 2020 to 2022 Being a Subdivision  
of Lot 1508 DP 528689.

Surveyor: Brett Douglas Gawn  
Firm: Calibre Consulting Limited

Title Plan  
LT 557561  
DRAFT



Diag. J



T 19/23

Land District: Wellington

Digitally Generated Plan

Generated on: 07/07/2021 3:13pm Page 32 of 36

Lots 171 to 184, 201 to 273, 1004, 1510 and 2020 Being a Subdivision of Lot 1508 DP 528689.

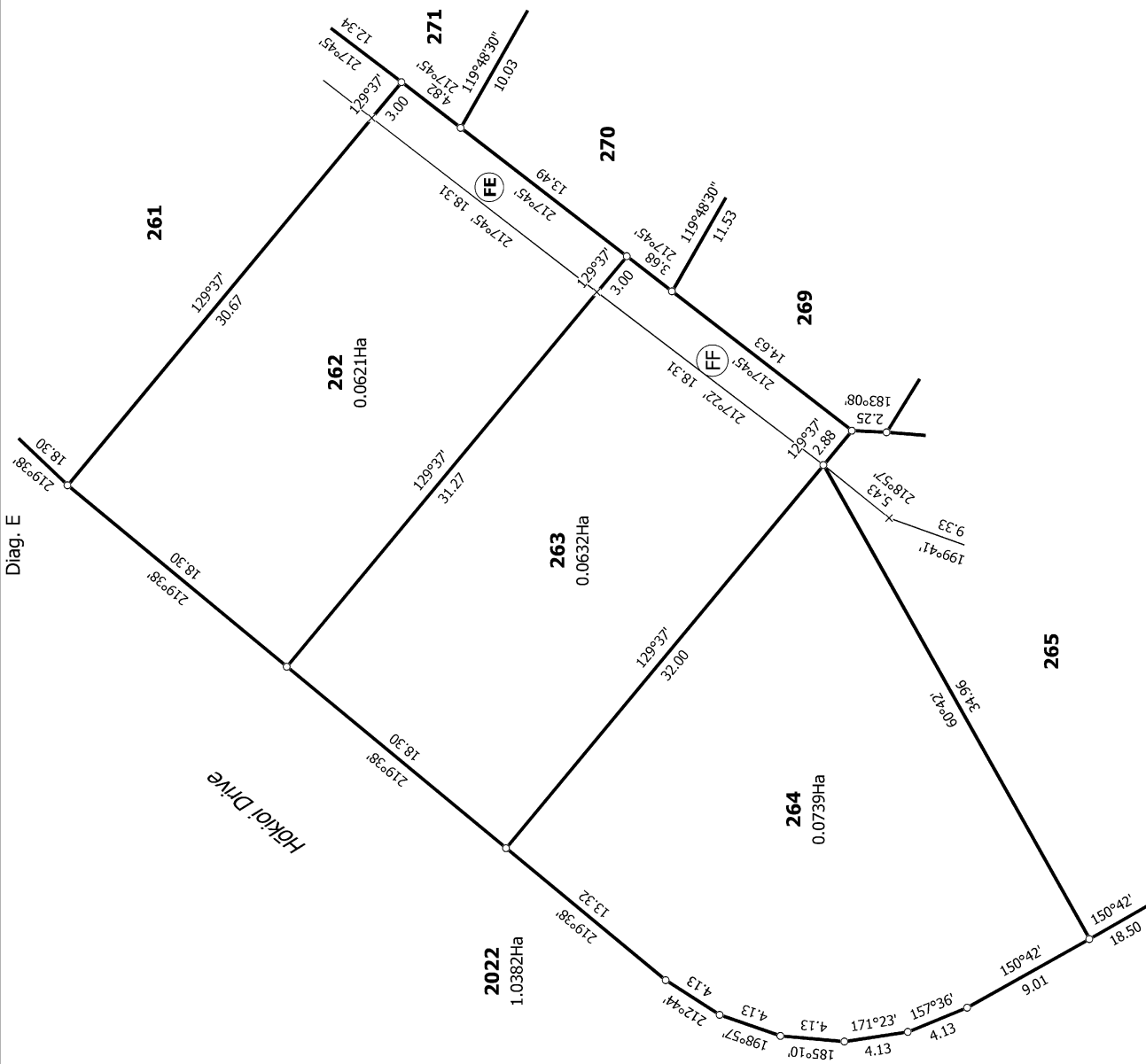
Surveyor: Brett Douglas Gawn  
Firm: Callibre Consulting Limited

Title Plan  
LT 557561  
DRAFT





Diag. E



T 20/23

Land District: Wellington

**Digitally Generated Plan**

Generated on: 07/07/2021 3:13pm Page 33 of 36

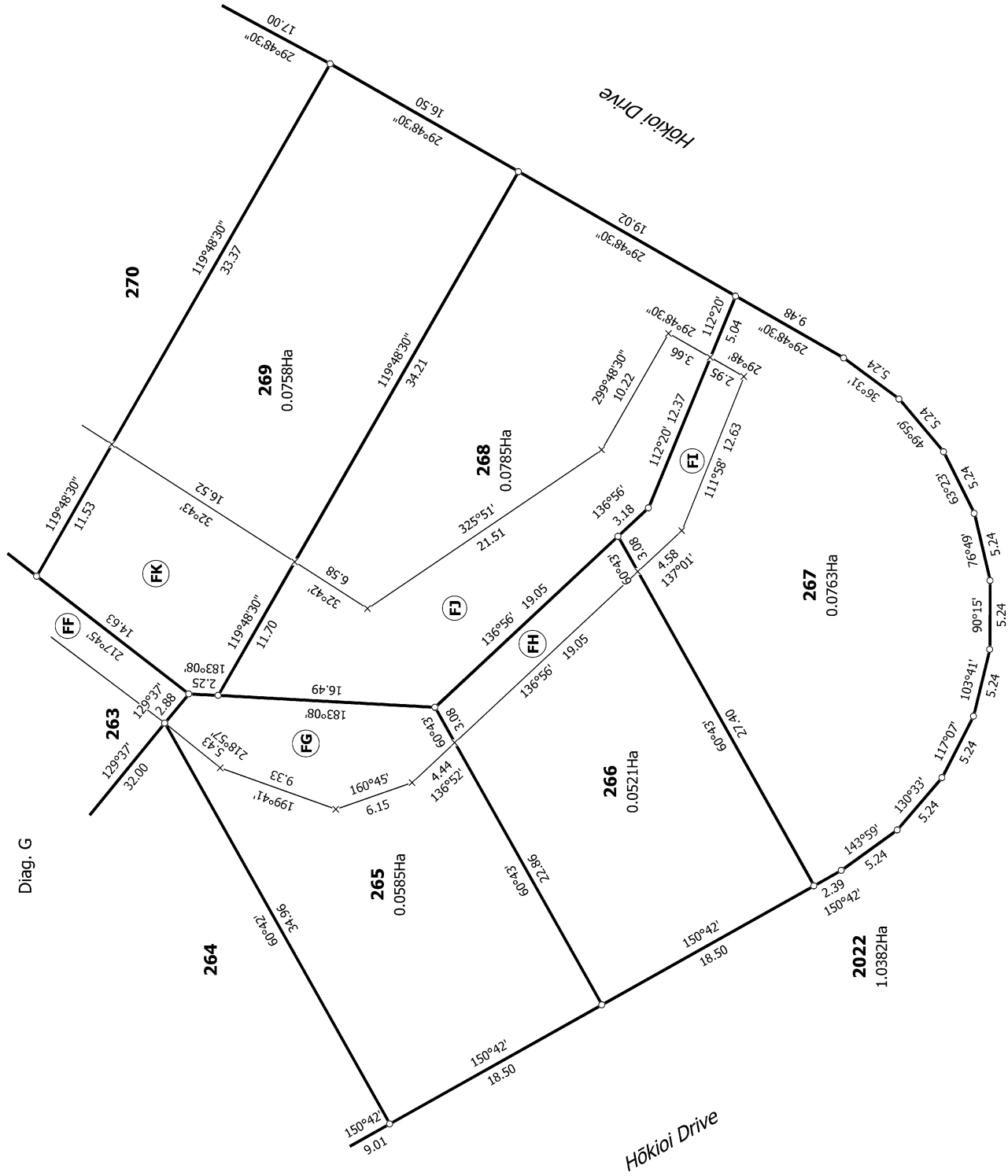
**Lots 171 to 184, 201 to 273, 1004, 1510 and 2020 to 2022 Being a Subdivision of Lot 1508 DP 528689.**

Surveyor: Brett Douglas Gawn  
Firm: Callibre Consulting Limited

**Title Plan  
LT 557561  
DRAFT**



Diag. G



T 21/23

Land District: Wellington

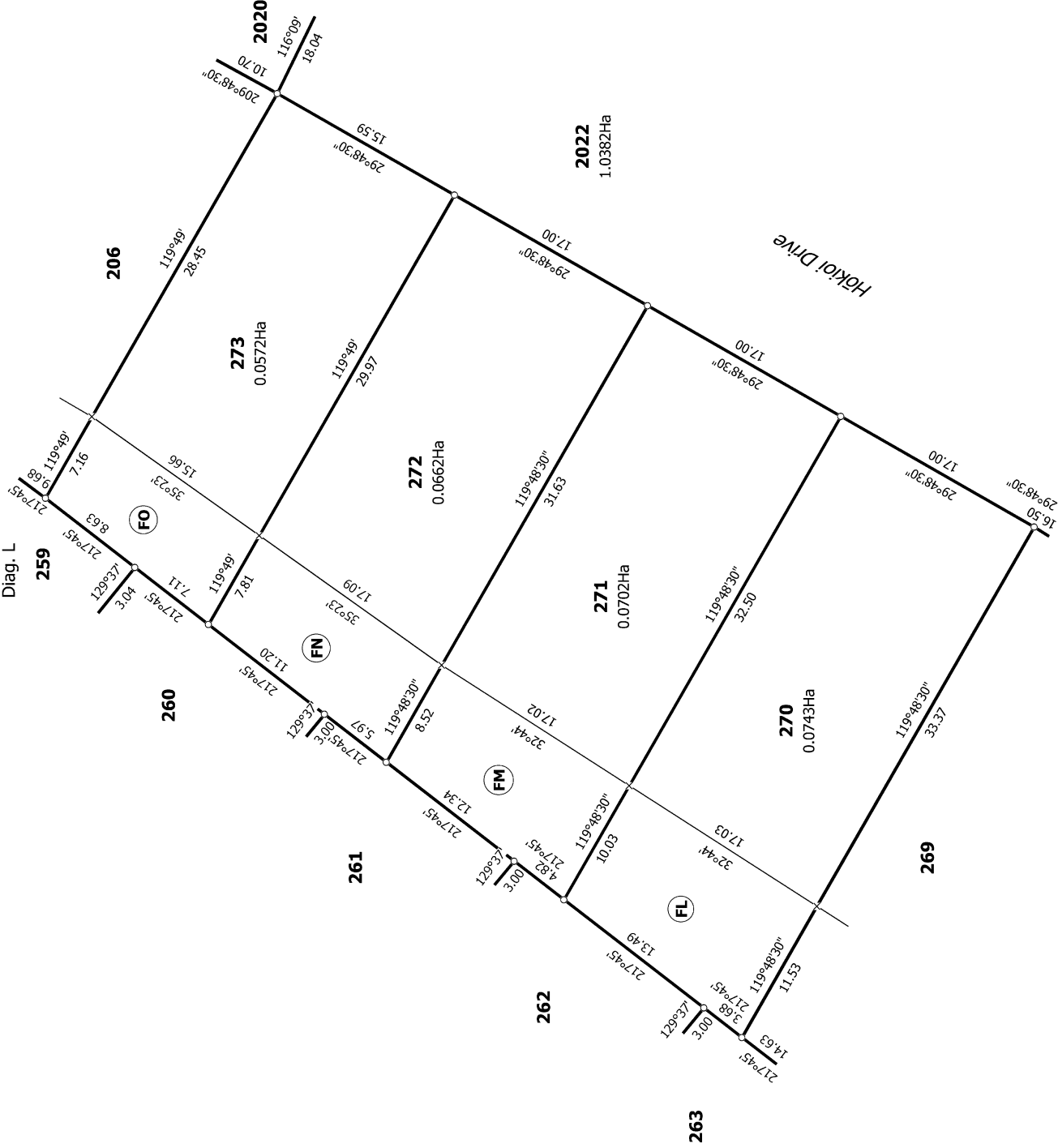
**Digitally Generated Plan**

Generated on: 07/07/2021 3:13pm Page 34 of 36

**Lots 171 to 184, 201 to 273, 1004, 1510 and 2020 to 2022 Being a Subdivision of Lot 1508 DP 528689.**

Surveyor: Brett Douglas Gawn  
Firm: Calibre Consulting Limited

**Title Plan  
LT 557561  
DRAFT**



T 22/23

Land District: Wellington

**Digitally Generated Plan**

Generated on: 07/07/2021 3:13pm Page 35 of 36

**Lots 171 to 184, 201 to 273, 1004, 1510 and 2020 to 2022 Being a Subdivision of Lot 1508 DP 528689.**

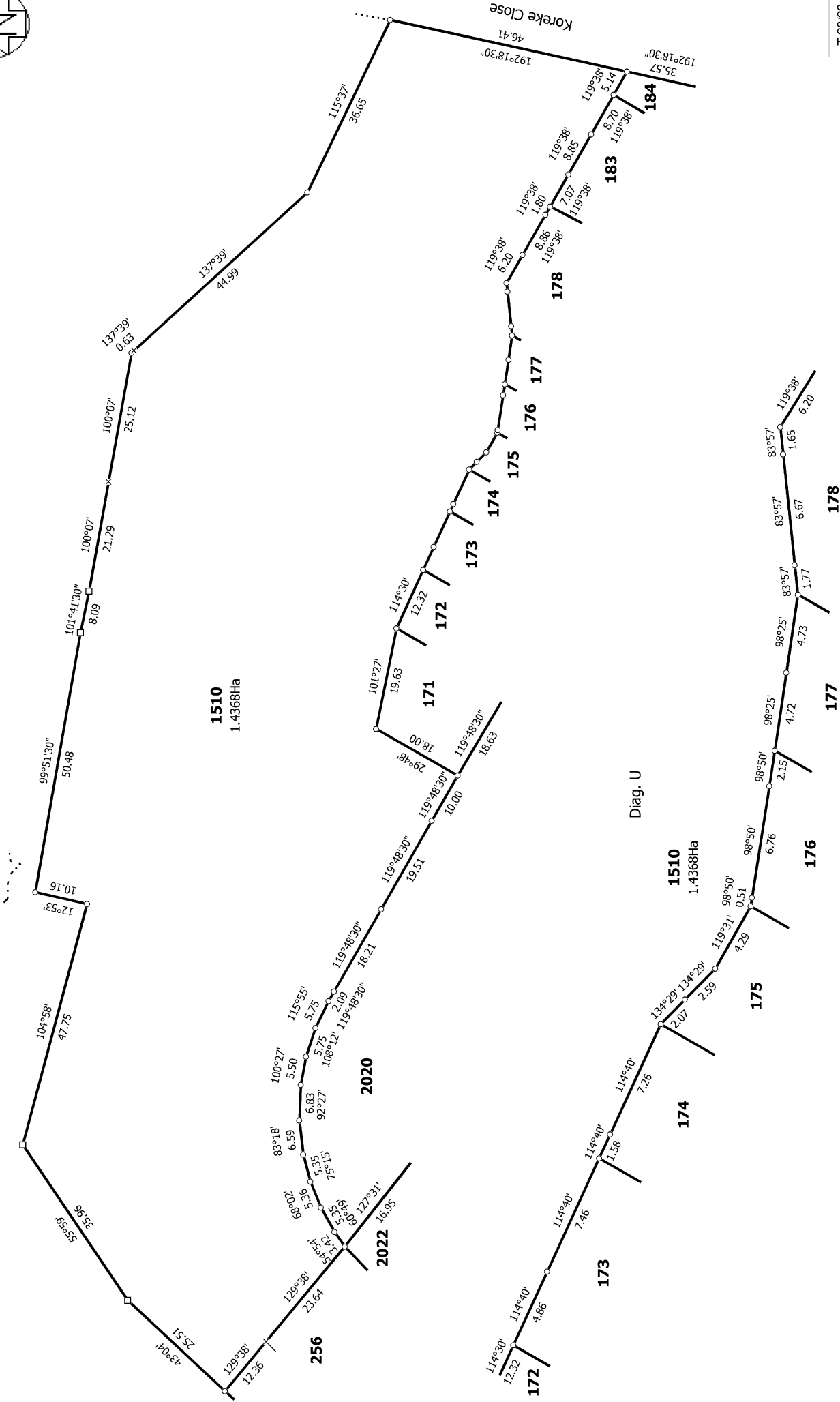
Surveyor: Brett Douglas Gawn  
Firm: Calibre Consulting Limited

**Title Plan  
LT 557561  
DRAFT**



Lot 11 DP 428849

Diag. K



T 23/23

Land District: Wellington

**Digitally Generated Plan**

Generated on: 01/07/2021 3:13pm Page 36 of 36

**Lots 171 to 184, 201 to 273, 1004, 1510 and 2020 to 2022 Being a Subdivision of Lot 1508 DP 528689.**

Surveyor: Brett Douglas Gawn  
Firm: Callibre Consulting Limited

**Title Plan  
LT 557561  
DRAFT**



# Title Plan - DP 568251

---

**Survey Number** DP 568251  
**Surveyor Reference** 709306.006 Kenepuru Stage 2c  
**Surveyor** Jordan Friis  
**Survey Firm** Calibre Consulting Limited  
**Surveyor Declaration** I Jordan Friis, being a licensed cadastral surveyor, certify that--  
(a) this dataset provided by me and its related survey are accurate, correct and in accordance with the Cadastral Survey Act 2002 and Cadastral Survey Rules 2021; and  
(b) the survey was undertaken by me or under my personal direction.  
Declared on 10 Feb 2022 11:53 AM

---

## Survey Details

**Dataset Description** Lots 145 to 170, 185 to 200, 1002, 1003 and 2019 Being a Subdivision of Lot 1510 DP 557561  
**Status** Deposited  
**Land District** Wellington  
**Submitted Date** 10/02/2022

**Survey Class** Class A  
**Survey Approval Date** 10/02/2022  
**Deposit Date** 14/02/2022

---

## Territorial Authorities

Porirua City

---

## Comprised In

RT 991905

---

## Created Parcels

Parcels	Parcel Intent	Area	RT Reference
Lot 185 Deposited Plan 568251	Fee Simple Title	0.0297 Ha	1025846
Lot 186 Deposited Plan 568251	Fee Simple Title	0.0226 Ha	1025847
Lot 187 Deposited Plan 568251	Fee Simple Title	0.0217 Ha	1025848
Lot 188 Deposited Plan 568251	Fee Simple Title	0.0208 Ha	1025849
Lot 189 Deposited Plan 568251	Fee Simple Title	0.0173 Ha	1025850
Lot 190 Deposited Plan 568251	Fee Simple Title	0.0184 Ha	1025851
Lot 191 Deposited Plan 568251	Fee Simple Title	0.0217 Ha	1025852
Lot 192 Deposited Plan 568251	Fee Simple Title	0.0199 Ha	1025853
Lot 193 Deposited Plan 568251	Fee Simple Title	0.0199 Ha	1025854
Lot 194 Deposited Plan 568251	Fee Simple Title	0.0193 Ha	1025855
Lot 195 Deposited Plan 568251	Fee Simple Title	0.0222 Ha	1025856
Lot 196 Deposited Plan 568251	Fee Simple Title	0.0203 Ha	1025857
Lot 197 Deposited Plan 568251	Fee Simple Title	0.0325 Ha	1025858
Lot 198 Deposited Plan 568251	Fee Simple Title	0.0314 Ha	1025859
Lot 167 Deposited Plan 568251	Fee Simple Title	0.0443 Ha	1025860
Lot 168 Deposited Plan 568251	Fee Simple Title	0.0408 Ha	1025861
Lot 169 Deposited Plan 568251	Fee Simple Title	0.0354 Ha	1025862
Lot 170 Deposited Plan 568251	Fee Simple Title	0.0279 Ha	1025863
Lot 199 Deposited Plan 568251	Fee Simple Title	0.0282 Ha	1025864
Lot 200 Deposited Plan 568251	Fee Simple Title	0.0475 Ha	1025865



# Title Plan - DP 568251

## Created Parcels

Parcels	Parcel Intent	Area	RT Reference
Lot 145 Deposited Plan 568251	Fee Simple Title	0.0332 Ha	1025866
Lot 146 Deposited Plan 568251	Fee Simple Title	0.0228 Ha	1025867
Lot 147 Deposited Plan 568251	Fee Simple Title	0.0250 Ha	1025868
Lot 148 Deposited Plan 568251	Fee Simple Title	0.0240 Ha	1025869
Lot 149 Deposited Plan 568251	Fee Simple Title	0.0232 Ha	1025870
Lot 150 Deposited Plan 568251	Fee Simple Title	0.0222 Ha	1025871
Lot 151 Deposited Plan 568251	Fee Simple Title	0.0279 Ha	1025872
Lot 152 Deposited Plan 568251	Fee Simple Title	0.0395 Ha	1025873
Lot 153 Deposited Plan 568251	Fee Simple Title	0.0217 Ha	1025874
Lot 154 Deposited Plan 568251	Fee Simple Title	0.0152 Ha	1025875
Lot 155 Deposited Plan 568251	Fee Simple Title	0.0147 Ha	1025876
Lot 156 Deposited Plan 568251	Fee Simple Title	0.0098 Ha	1025877
Lot 157 Deposited Plan 568251	Fee Simple Title	0.0095 Ha	1025878
Lot 158 Deposited Plan 568251	Fee Simple Title	0.0092 Ha	1025879
Lot 159 Deposited Plan 568251	Fee Simple Title	0.0131 Ha	1025880
Lot 160 Deposited Plan 568251	Fee Simple Title	0.0161 Ha	1025881
Lot 161 Deposited Plan 568251	Fee Simple Title	0.0144 Ha	1025882
Lot 162 Deposited Plan 568251	Fee Simple Title	0.0147 Ha	1025883
Lot 163 Deposited Plan 568251	Fee Simple Title	0.0150 Ha	1025884
Lot 164 Deposited Plan 568251	Fee Simple Title	0.0153 Ha	1025885
Lot 165 Deposited Plan 568251	Fee Simple Title	0.0156 Ha	1025886
Lot 166 Deposited Plan 568251	Fee Simple Title	0.0222 Ha	1025887
Lot 1002 Deposited Plan 568251	Vesting on Deposit for Local Purpose Reserve	0.0538 Ha	1026771
Lot 1003 Deposited Plan 568251	Vesting on Deposit for Local Purpose Reserve Road	0.0267 Ha 0.3879 Ha	1026772
Area A Deposited Plan 568251	Easement		
Area B Deposited Plan 568251	Easement		
Area C Deposited Plan 568251	Easement		
Area D Deposited Plan 568251	Easement		
Area K Deposited Plan 568251	Easement		
Area L Deposited Plan 568251	Easement		
Area M Deposited Plan 568251	Easement		
Area N Deposited Plan 568251	Easement		
Area O Deposited Plan 568251	Easement		
Area P Deposited Plan 568251	Easement		
Area Q Deposited Plan 568251	Easement		
Area R Deposited Plan 568251	Easement		
Area S Deposited Plan 568251	Easement		
Area T Deposited Plan 568251	Easement		
Area U Deposited Plan 568251	Easement		
Area V Deposited Plan 568251	Easement		
Area W Deposited Plan 568251	Easement		

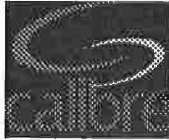


# Title Plan - DP 568251

---

## Created Parcels

Parcels	Parcel Intent	Area	RT Reference
Area X Deposited Plan 568251	Easement		
Area Y Deposited Plan 568251	Easement		
Area Z Deposited Plan 568251	Easement		
Area AA Deposited Plan 568251	Easement		
Area AB Deposited Plan 568251	Easement		
Area AC Deposited Plan 568251	Easement		
Area AD Deposited Plan 568251	Easement		
Area AE Deposited Plan 568251	Easement		
Area AF Deposited Plan 568251	Easement		
Area AG Deposited Plan 568251	Easement		
Area AH Deposited Plan 568251	Easement		
Area AI Deposited Plan 568251	Easement		
Area AJ Deposited Plan 568251	Easement		
Area AK Deposited Plan 568251	Easement		
Area AL Deposited Plan 568251	Easement		
Area AM Deposited Plan 568251	Easement		
Area AN Deposited Plan 568251	Easement		
Area AO Deposited Plan 568251	Easement		
Area AP Deposited Plan 568251	Easement		
Area AQ Deposited Plan 568251	Easement		
Area AR Deposited Plan 568251	Easement		
Area AS Deposited Plan 568251	Easement		
Area AT Deposited Plan 568251	Easement		
Area AU Deposited Plan 568251	Easement		
Area AV Deposited Plan 568251	Easement		
Area AW Deposited Plan 568251	Easement		
Area AX Deposited Plan 568251	Easement		
Area AY Deposited Plan 568251	Easement		
Area AZ Deposited Plan 568251	Easement		
Area BB Deposited Plan 568251	Easement		
Area BC Deposited Plan 568251	Easement		
Area BA Deposited Plan 568251	Easement		
Area E Deposited Plan 568251	Easement		
Area F Deposited Plan 568251	Easement		
Area G Deposited Plan 568251	Easement		
Area H Deposited Plan 568251	Easement		
Area I Deposited Plan 568251	Easement		
Area J Deposited Plan 568251	Easement		
<b>Total Area</b>		1.4345 Ha	



CALIBRE CONSULTING LTD

PO Box 6643 | Wellington 6041  
 Level 13, Kordia House | 109 - 125 Willis Street  
 Te Aro | Wellington 6011  
 +64 4 384 2029 | www.calibregroup.com

**DP 568251**

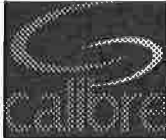
**SCHEDULE OF EASEMENTS**

Purpose	Shown as	Burdened Land	Benefited Land
Party Wall	A	Lot 185 Hereon	Lot 186 Hereon
	B	Lot 186 Hereon	Lot 185 Hereon
	C	Lot 187 Hereon	Lot 188 Hereon
	D	Lot 188 Hereon	Lot 187 Hereon
	E	Lot 189 Hereon	Lot 190 Hereon
	F	Lot 190 Hereon	Lot 189 Hereon
	G	Lot 191 Hereon	Lot 192 Hereon
	H	Lot 192 Hereon	Lot 191 Hereon
	I	Lot 193 Hereon	Lot 194 Hereon
	J	Lot 194 Hereon	Lot 193 Hereon
	K	Lot 195 Hereon	Lot 196 Hereon
	L	Lot 196 Hereon	Lot 195 Hereon
	M	Lot 146 Hereon	Lot 147 Hereon
	N	Lot 147 Hereon	Lot 146 Hereon
	O	Lot 148 Hereon	Lot 149 Hereon
	P	Lot 149 Hereon	Lot 148 Hereon
	Q	Lot 150 Hereon	Lot 151 Hereon
	R	Lot 151 Hereon	Lot 150 Hereon
	S	Lot 153 Hereon	Lot 154 Hereon
	T	Lot 154 Hereon	Lot 153 Hereon
	U	Lot 154 Hereon	Lot 155 Hereon
	V	Lot 155 Hereon	Lot 154 Hereon
	W	Lot 155 Hereon	Lot 156 Hereon
	X	Lot 156 Hereon	Lot 155 Hereon
	Y	Lot 156 Hereon	Lot 157 Hereon
	Z	Lot 157 Hereon	Lot 156 Hereon
	AA	Lot 157 Hereon	Lot 158 Hereon
	AB	Lot 158 Hereon	Lot 157 Hereon
AC	Lot 158 Hereon	Lot 159 Hereon	
AD	Lot 159 Hereon	Lot 158 Hereon	
AE	Lot 159 Hereon	Lot 160 Hereon	
AF	Lot 160 Hereon	Lot 159 Hereon	
AG	Lot 161 Hereon	Lot 162 Hereon	
AH	Lot 162 Hereon	Lot 161 Hereon	
AI	Lot 163 Hereon	Lot 164 Hereon	
AJ	Lot 164 Hereon	Lot 163 Hereon	
AK	Lot 165 Hereon	Lot 166 Hereon	
AL	Lot 166 Hereon	Lot 165 Hereon	



**SCHEDULE OF EASEMENTS**

Purpose	Shown as	Burdened Land	Benefited Land
Right of Support	BA	Lot 169 Hereon	Lot 168, Lot 170 Hereon
	BB	Lot 168 Hereon	Lot 169, Lot 170 Hereon
	BC	Lot 170 Hereon	Lot 168, Lot 169 Hereon

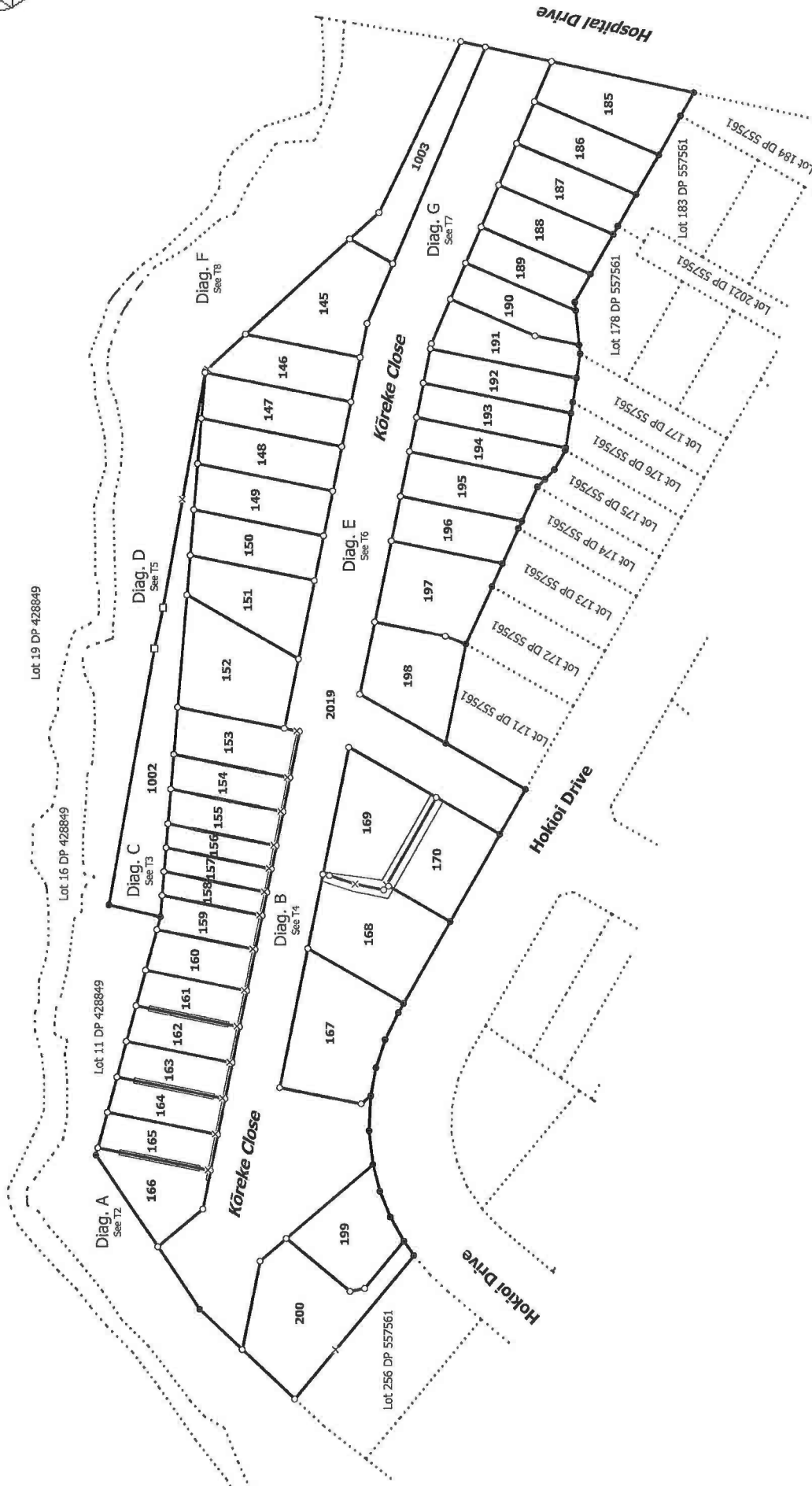


**DP 568251**

**MEMORANDUM OF EASEMENTS IN GROSS**

Purpose	Shown as	Burdened Land	Grantee
Right to convey water	AM	Lot 166 Hereon	Porirua City Council
Right to convey electricity			Wellington Electricity Lines Limited
Right to convey telecommunications			Chorus New Zealand Limited
Right to convey water	AN	Lot 165 Hereon	Porirua City Council
Right to convey electricity			Wellington Electricity Lines Limited
Right to convey telecommunications			Chorus New Zealand Limited
Right to convey water	AO	Lot 164 Hereon	Porirua City Council
Right to convey electricity			Wellington Electricity Lines Limited
Right to convey telecommunications			Chorus New Zealand Limited
Right to convey water	AP	Lot 163 Hereon	Porirua City Council
Right to convey electricity			Wellington Electricity Lines Limited
Right to convey telecommunications			Chorus New Zealand Limited
Right to convey water	AQ	Lot 162 Hereon	Porirua City Council
Right to convey electricity			Wellington Electricity Lines Limited
Right to convey telecommunications			Chorus New Zealand Limited
Right to convey water	AR	Lot 161 Hereon	Porirua City Council
Right to convey electricity			Wellington Electricity Lines Limited
Right to convey telecommunications			Chorus New Zealand Limited
Right to convey water	AS	Lot 160 Hereon	Porirua City Council
Right to convey electricity			Wellington Electricity Lines Limited
Right to convey telecommunications			Chorus New Zealand Limited

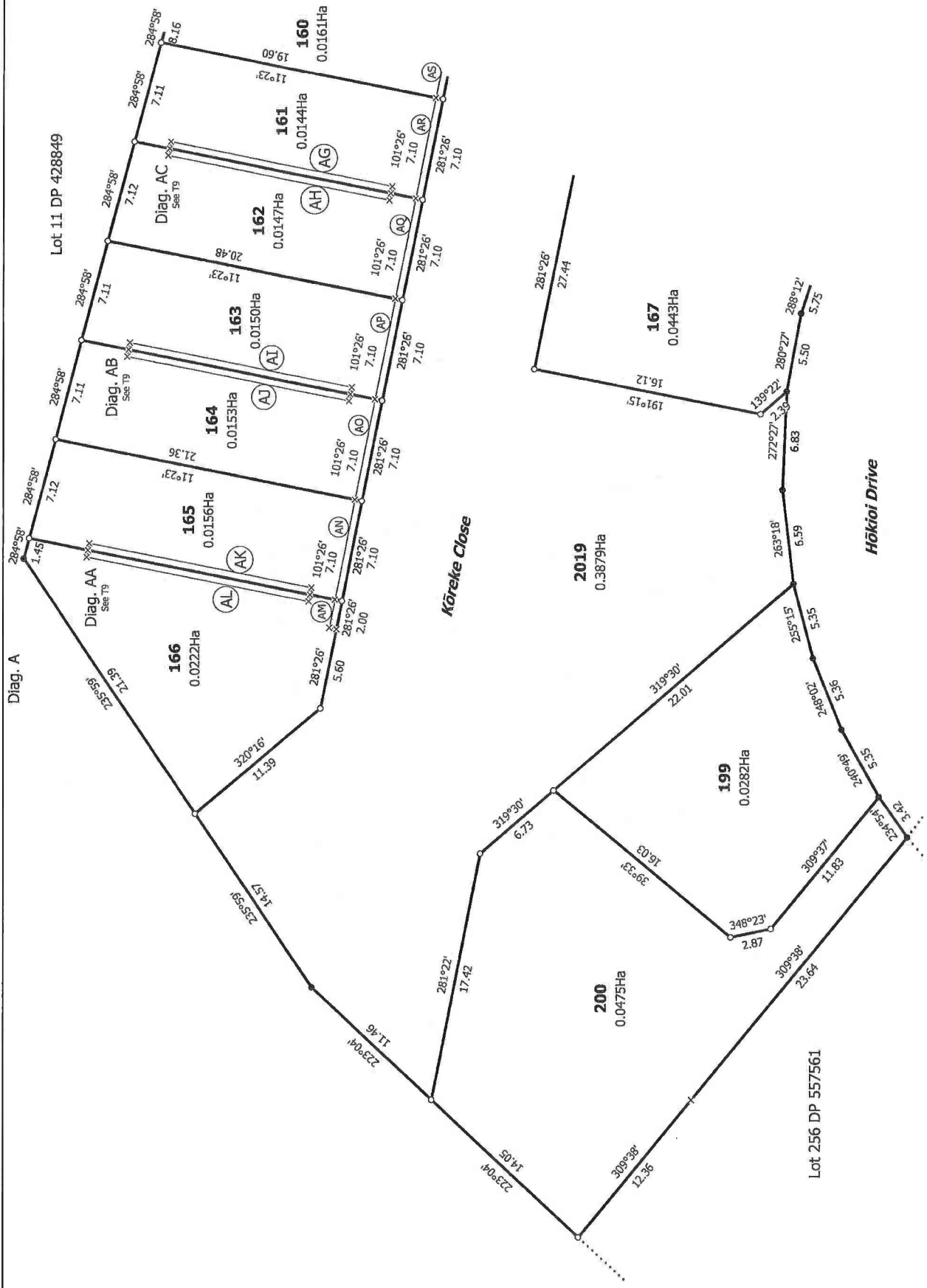
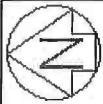
Right to convey water	AT	Lot 159 Hereon	Porirua City Council
Right to convey electricity			Wellington Electricity Lines Limited
Right to convey telecommunications			Chorus New Zealand Limited
Right to convey water	AU	Lot 158 Hereon	Porirua City Council
Right to convey electricity			Wellington Electricity Lines Limited
Right to convey telecommunications			Chorus New Zealand Limited
Right to convey water	AV	Lot 157 Hereon	Porirua City Council
Right to convey electricity			Wellington Electricity Lines Limited
Right to convey telecommunications			Chorus New Zealand Limited
Right to convey water	AW	Lot 156 Hereon	Porirua City Council
Right to convey electricity			Wellington Electricity Lines Limited
Right to convey telecommunications			Chorus New Zealand Limited
Right to convey water	AX	Lot 155 Hereon	Porirua City Council
Right to convey electricity			Wellington Electricity Lines Limited
Right to convey telecommunications			Chorus New Zealand Limited
Right to convey water	AY	Lot 154 Hereon	Porirua City Council
Right to convey electricity			Wellington Electricity Lines Limited
Right to convey telecommunications			Chorus New Zealand Limited
Right to convey water	AZ	Lot 153 Hereon	Porirua City Council
Right to convey electricity			Wellington Electricity Lines Limited
Right to convey telecommunications			Chorus New Zealand Limited



Lot 1003 to Vest as Local Purpose Reserve (Drainage) in Porirua District Council  
 Lot 1002 to Vest as Local Purpose Reserve (Esplanade) in Porirua District Council  
 Lot 2019 to Vest as Road in Porirua District Council  
 All Lots Hereon are subject to Part IVA Conservation Act 1987

T 1/14

Land District: Wellington	Surveyor: Jordan Friis Firm: Calibre Consulting Limited	Title Plan DP 568251
Digitally Generated Plan Generated on: 10/03/2022 4:19pm Page 8 of 21	Lots 145 to 170, 185 to 200, 1002, 1003 and 2019 Being a Subdivision of Lot 1510 DP 557561	Deposited on: 14/02/2022

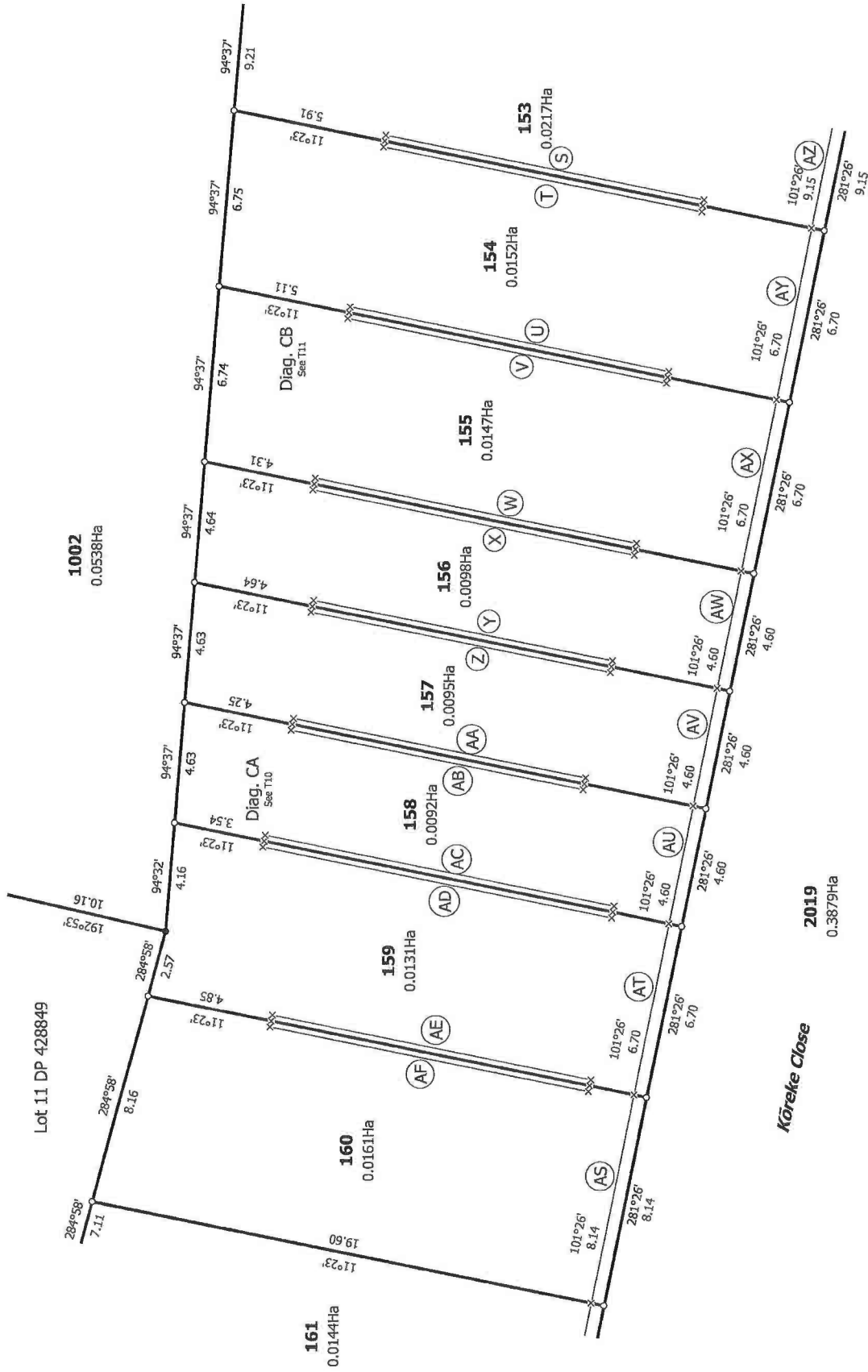


T 2/14

<p>Land District: Wellington</p> <p><b>Digitally Generated Plan</b></p> <p>Generated on: 10/03/2022 4:19pm Page 9 of 21</p>	<p><b>Lots 145 to 170, 185 to 200, 1002, 1003 and 2019 Being a Subdivision of Lot 1510 DP 557561</b></p>	<p>Surveyor: Jordan Friis</p> <p>Firm: Calibre Consulting Limited</p>	<p><b>Title Plan</b></p> <p><b>DP 568251</b></p> <p>Deposited on: 14/02/2022</p>
---	--	---	--



Diag. C



T 3/14

Title Plan  
DP 568251

Surveyor: Jordan Friis  
Firm: Callibre Consulting Limited

Lots 145 to 170, 185 to 200, 1002, 1003 and 2019 Being a Subdivision of Lot  
1510 DP 557561

Land District: Wellington

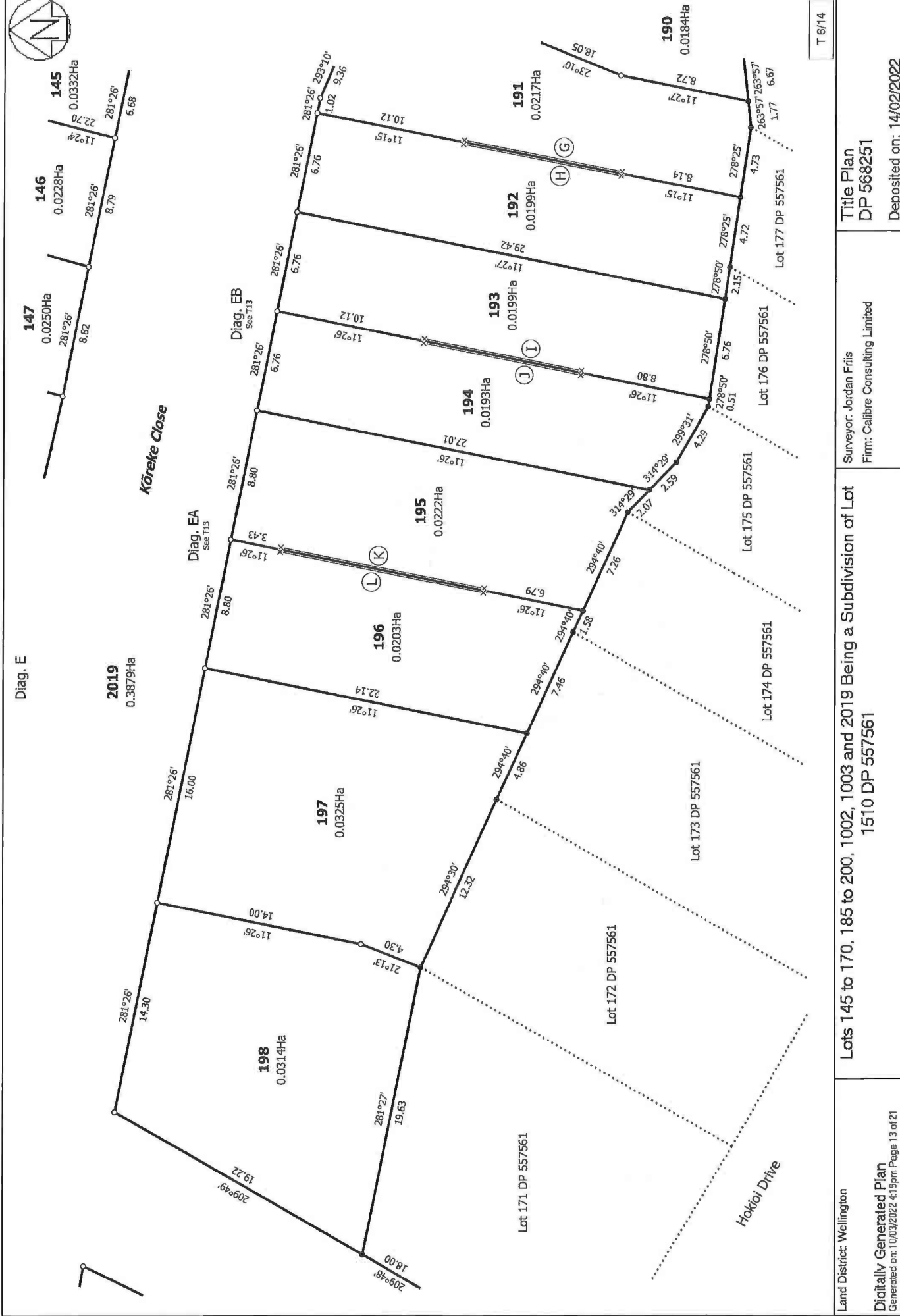
Digitally Generated Plan  
Generated on: 10/03/2022 4:19pm Page 10 of 21

Deposited on: 14/02/2022









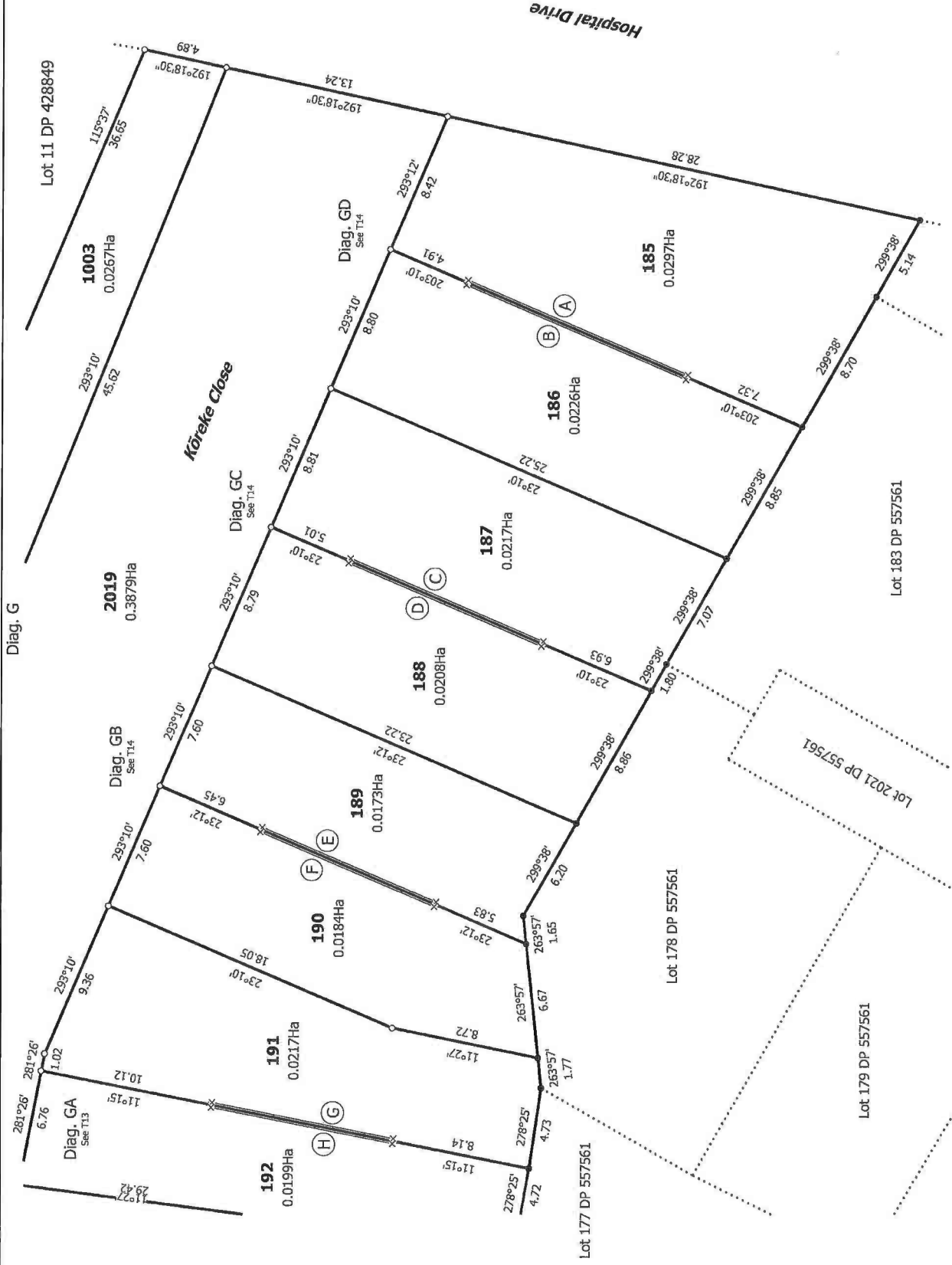
T 6/14

Land District: Wellington  
**Digitally Generated Plan**  
 Generated on: 10/03/2022 4:19pm Page 13 of 21

**Surveyor: Jordan Friis**  
**Firm: Calibre Consulting Limited**

**Lots 145 to 170, 185 to 200, 1002, 1003 and 2019 Being a Subdivision of Lot 1510 DP 557561**

**Title Plan DP 568251**  
 Deposited on: 14/02/2022



T 7/14

Land District: Wellington  
Digitally Generated Plan  
Generated on: 19/03/2022 4:19pm Page 14 of 21

Lots 145 to 170, 185 to 200, 1002, 1003 and 2019 Being a Subdivision of Lot 1510 DP 557561

Surveyor: Jordan Friis  
Firm: Calibre Consulting Limited

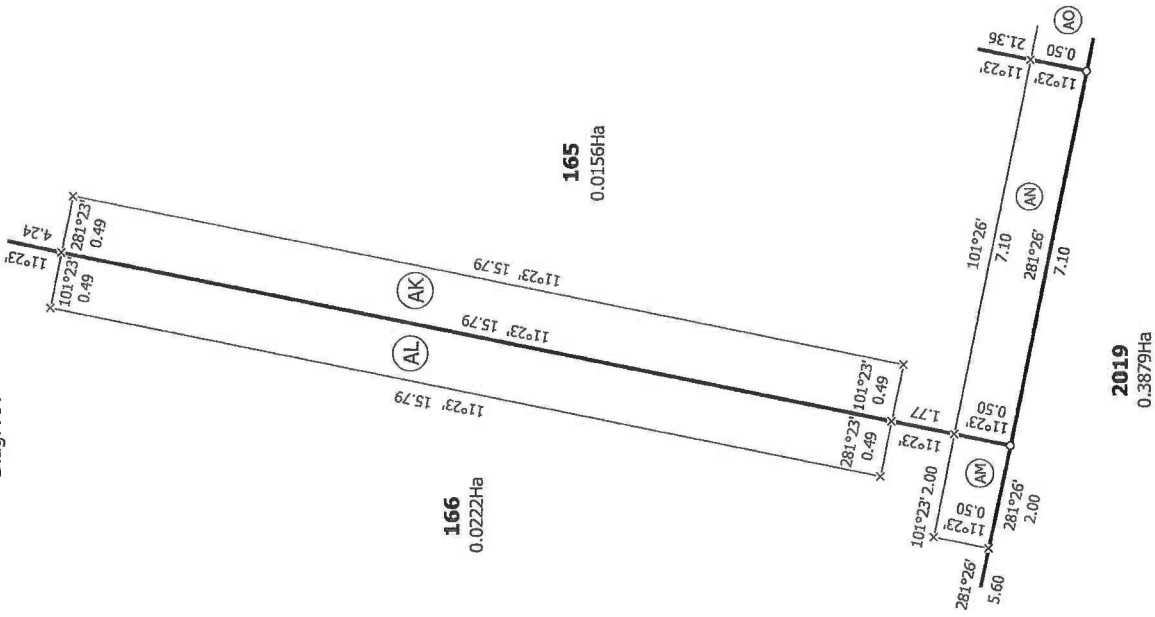
Title Plan  
DP 568251

Deposited on: 14/02/2022





Diag. AA

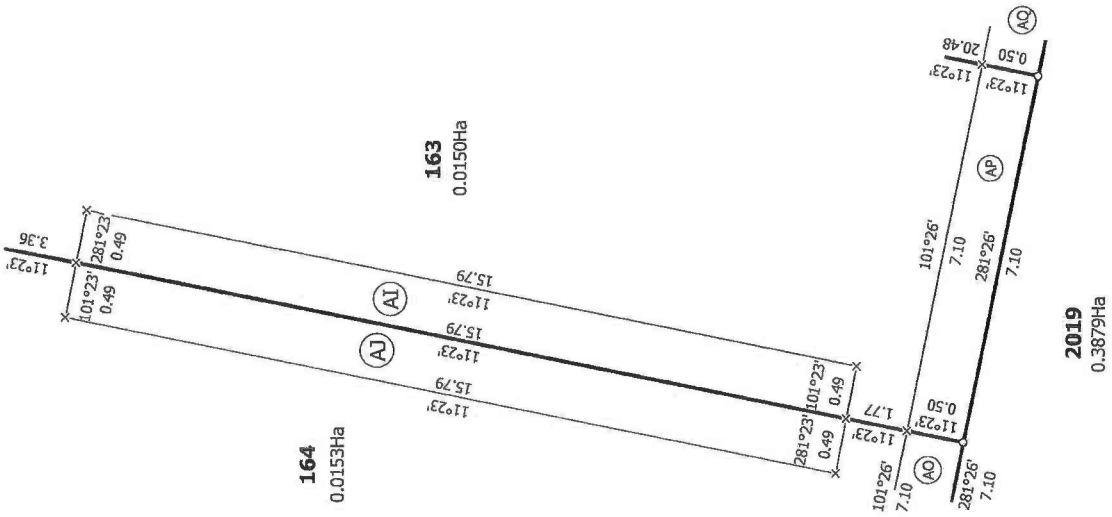


166  
0.0222Ha

165  
0.0156Ha

2019  
0.3879Ha

Diag. AB

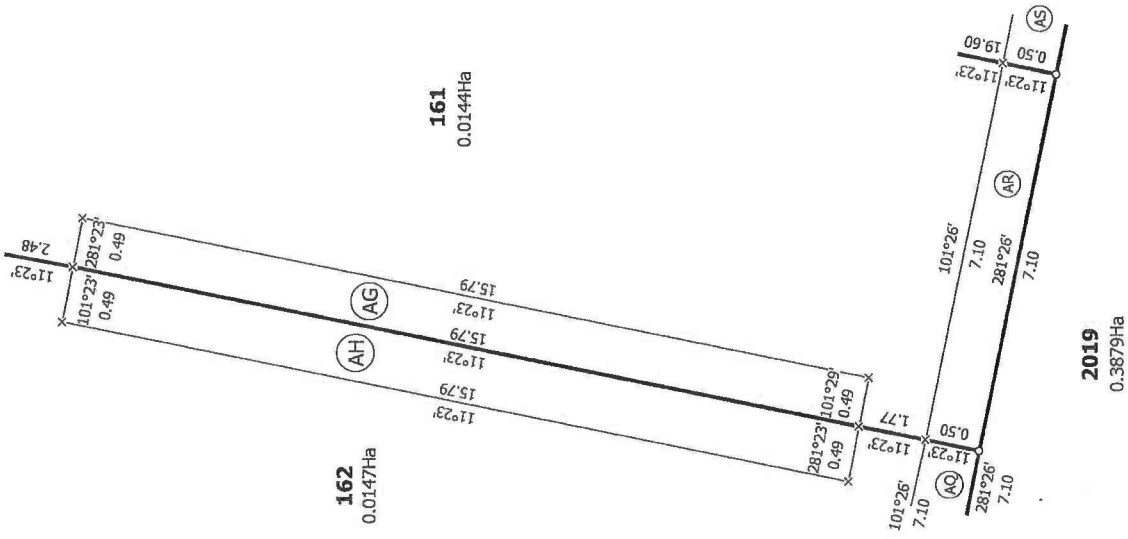


164  
0.0153Ha

163  
0.0150Ha

2019  
0.3879Ha

Diag. AC



162  
0.0147Ha

161  
0.0144Ha

2019  
0.3879Ha

T 9/14

Land District: Wellington  
Digitally Generated Plan  
Generated on: 14/03/2022 4:19pm Page 16 of 21

Lots 145 to 170, 185 to 200, 1002, 1003 and 2019 Being a Subdivision of Lot 1510 DP 557561

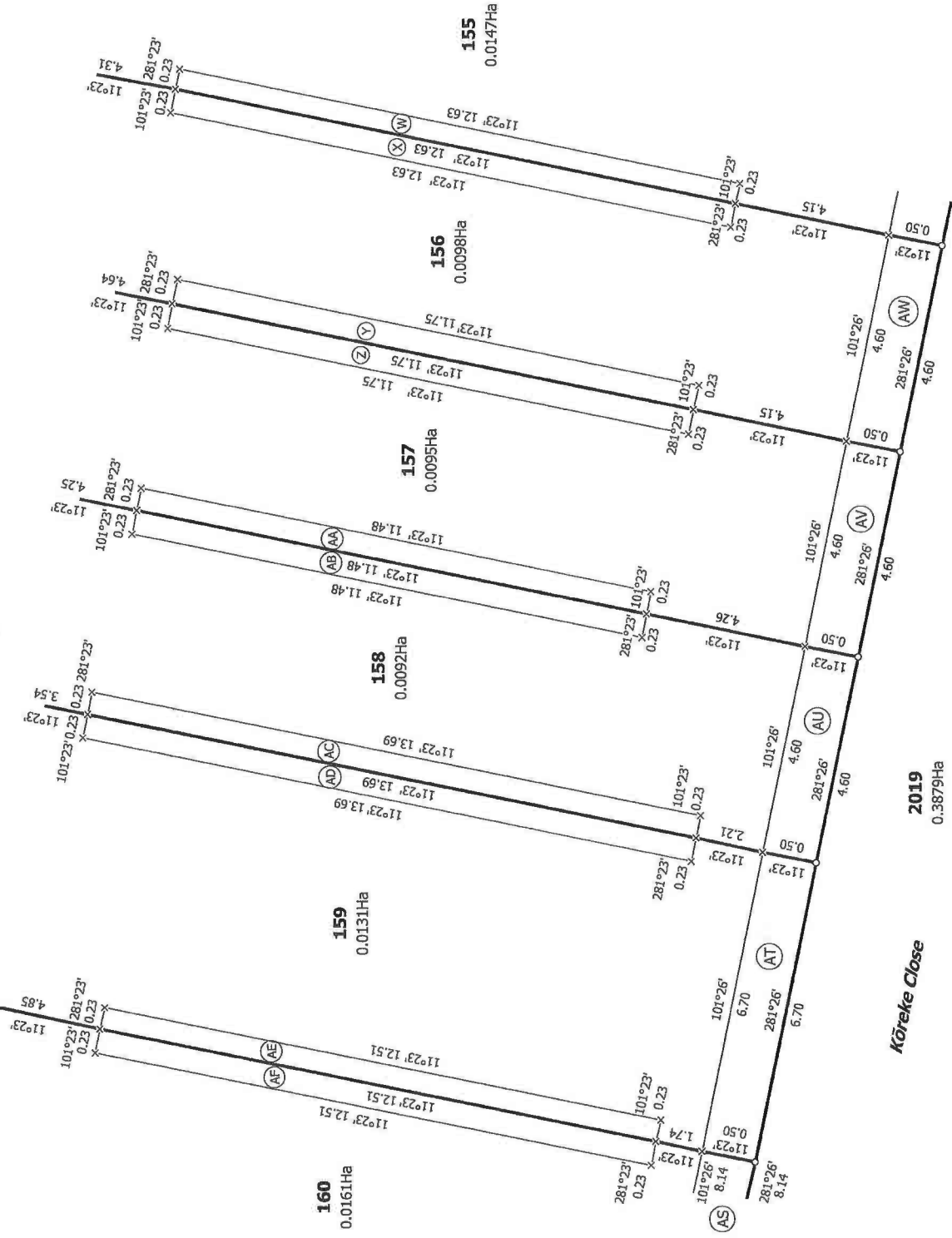
Surveyor: Jordan Fris  
Firm: Callibre Consulting Limited

Title Plan  
DP 568251

Deposited on: 14/02/2022



Diag. CA



T 10/14

Land District: Wellington

**Digitally Generated Plan**  
Generated on: 10/03/2022 4:19pm Page 17 of 21

Surveyor: Jordan Friis  
Firm: Calibre Consulting Limited

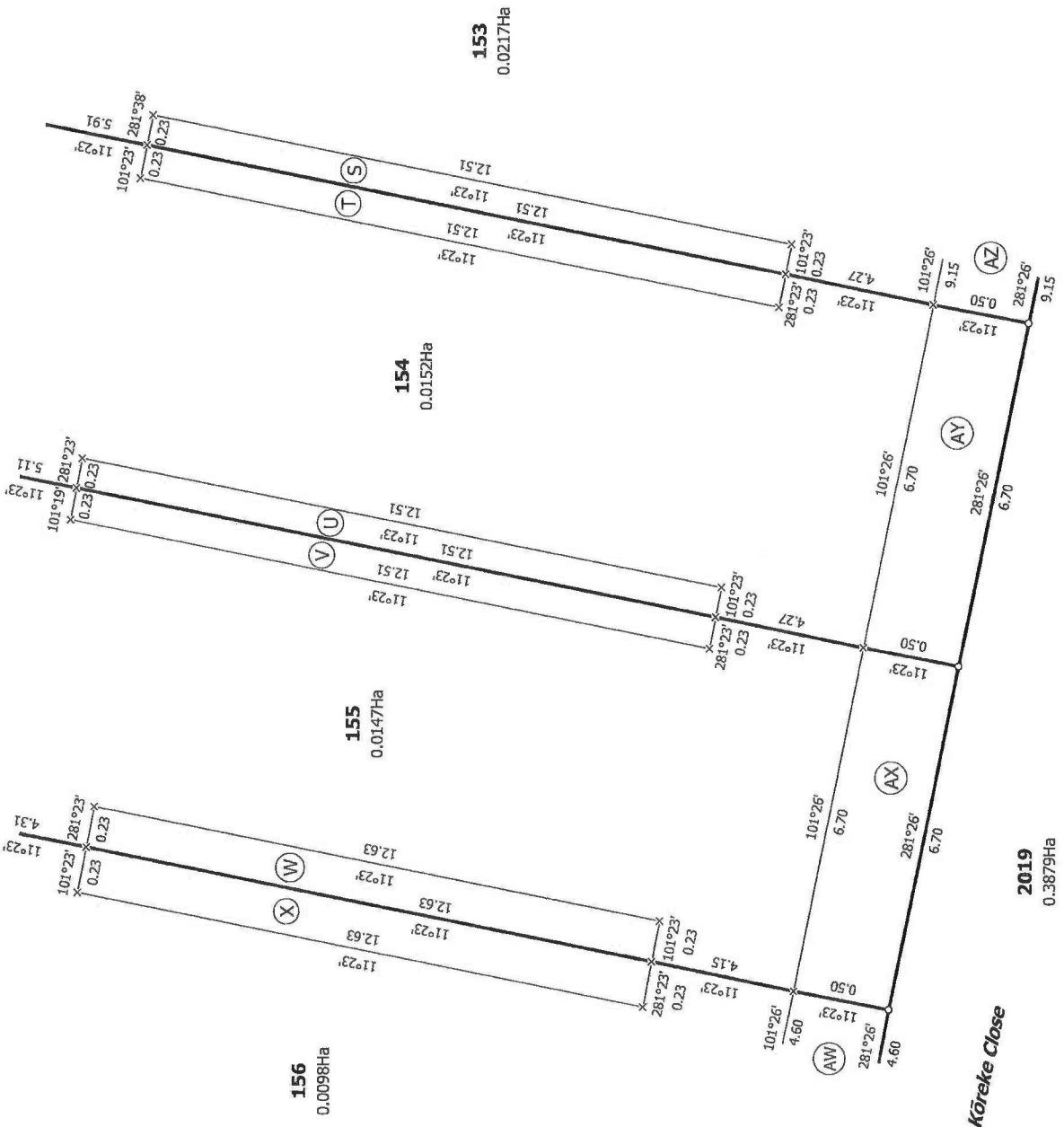
**Title Plan**  
DP 568251

Deposited on: 14/02/2022

**Lots 145 to 170, 185 to 200, 1002, 1003 and 2019 Being a Subdivision of Lot 1510 DP 557561**



Diag. CB



T 11/14

Land District: Wellington

Digitally Generated Plan

Generated on: 10/03/2022 4:19pm Page 18 of 21

Lots 145 to 170, 185 to 200, 1002, 1003 and 2019 Being a Subdivision of Lot 1510 DP 557561

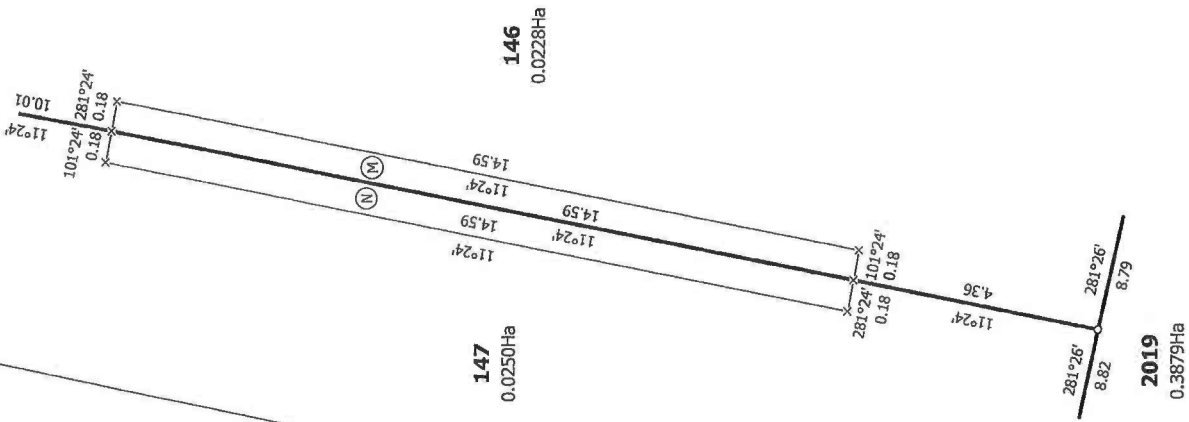
Surveyor: Jordan Friis  
Firm: Callibre Consulting Limited

Title Plan  
DP 568251

Deposited on: 14/02/2022



Diag. FA



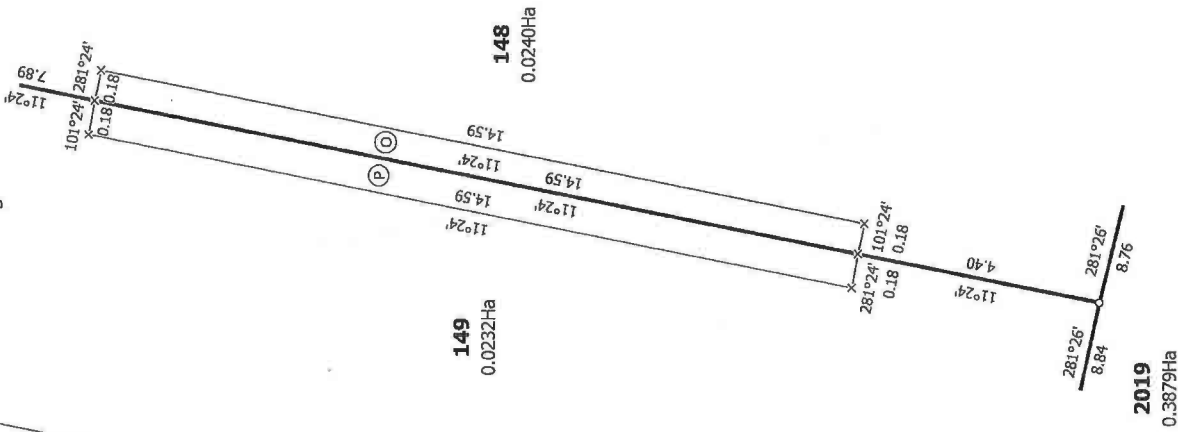
T 12/14

Title Plan  
DP 568251

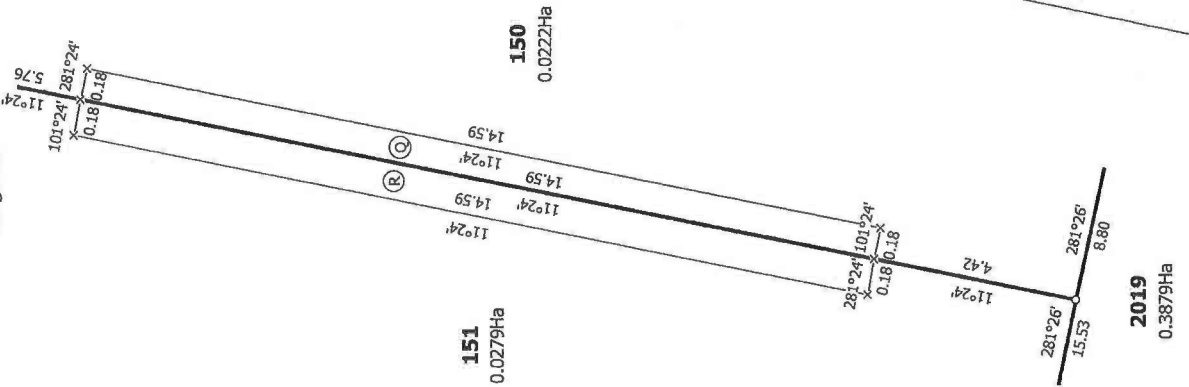
Deposited on: 14/02/2022

Surveyor: Jordan Friis  
Firm: Callbre Consulting Limited

Diag. DB



Diag. DA



Land District: Wellington  
Digitally Generated Plan  
Generated on: 10/03/2022 4:13pm Page 19 of 21

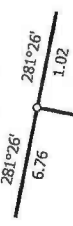
Lots 145 to 170, 185 to 200, 1002, 1003 and 2019 Being a Subdivision of Lot  
1510 DP 557561



T 13/14

Diag. GA

**2019**  
0.3879Ha



10.12  
11°15'

101°15' 281°15'  
0.15 0.15

**191**  
0.0217Ha

**192**  
0.0199Ha

11°15' 10.81  
11°15' 10.81  
11°15' 10.81

11°15' 8.14  
281°15' 101°15'  
0.15 0.15

Diag. EB

**2019**  
0.3879Ha



10.12  
11°26'

101°26' 281°26'  
0.15 0.15

**193**  
0.0199Ha

**194**  
0.0193Ha

11°26' 10.81  
11°26' 10.81  
11°26' 10.81

11°26' 8.80  
281°26' 101°26'  
0.15 0.15

Diag. EA

**2019**  
0.3879Ha



11°26' 3.43  
101°26' 101°26'  
0.15 0.15

**195**  
0.0222Ha

**196**  
0.0203Ha

11°26' 13.99  
11°26' 13.99  
11°26' 13.99

11°26' 6.79  
281°26' 281°26'  
0.15 0.15

Land District: Wellington

Lots 145 to 170, 185 to 200, 1002, 1003 and 2019 Being a Subdivision of Lot 1510 DP 557561

Surveyor: Jordan Friis  
Firm: Callibre Consulting Limited

Title Plan  
DP 568251

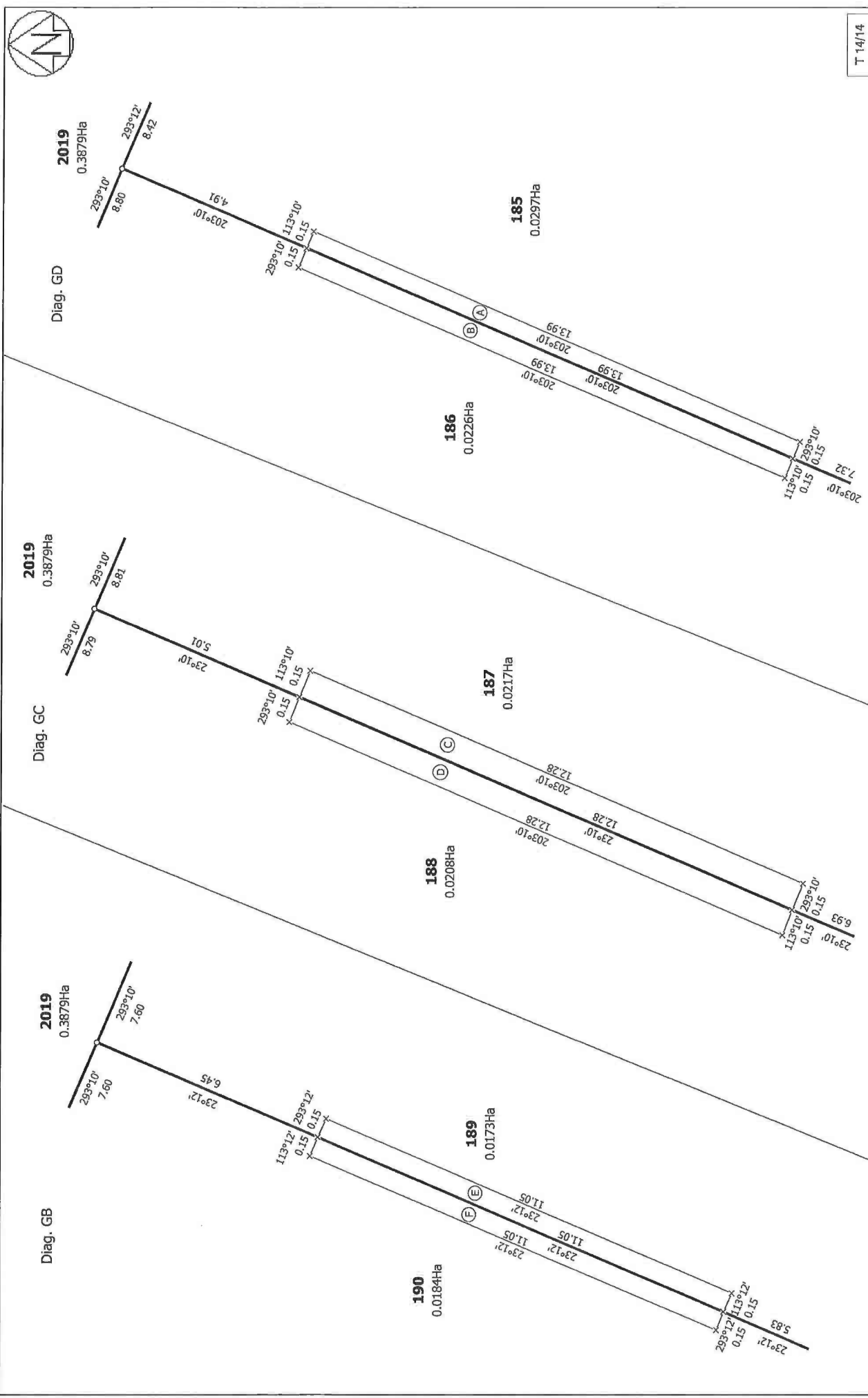
Digitally Generated Plan  
Generated on: 10/03/2022 4:19pm Page 20 of 21

Deposited on: 14/02/2022





T 14/14



Land District: Wellington  
 Digitally Generated Plan  
 Generated on: 11/03/2022 4:19pm Page 21 of 21

Lots 145 to 170, 185 to 200, 1002, 1003 and 2019 Being a Subdivision of Lot 1510 DP 557561

Surveyor: Jordan Fries  
 Firm: Calibre Consulting Limited

Title Plan  
 DP 568251

Deposited on: 14/02/2022